

# **Electrolux**

## Factory Parts Catalog

Product No.	E36GC75DSS1
	37766426840S1
Series	36" gas
Color	stainless
Market	North America
Wiring Diagram	318047110
Owner's Guide	318200665
Installation Instructions	318201455

# **Electrolux**

Electrolux Major Appliances  
North & Latin America  
P.O. BOX 212378  
AUGUSTA, GA 30917

Publication No.  
**5995504908**  
07/12/19  
(EN/SERVICE/ECL)  
377

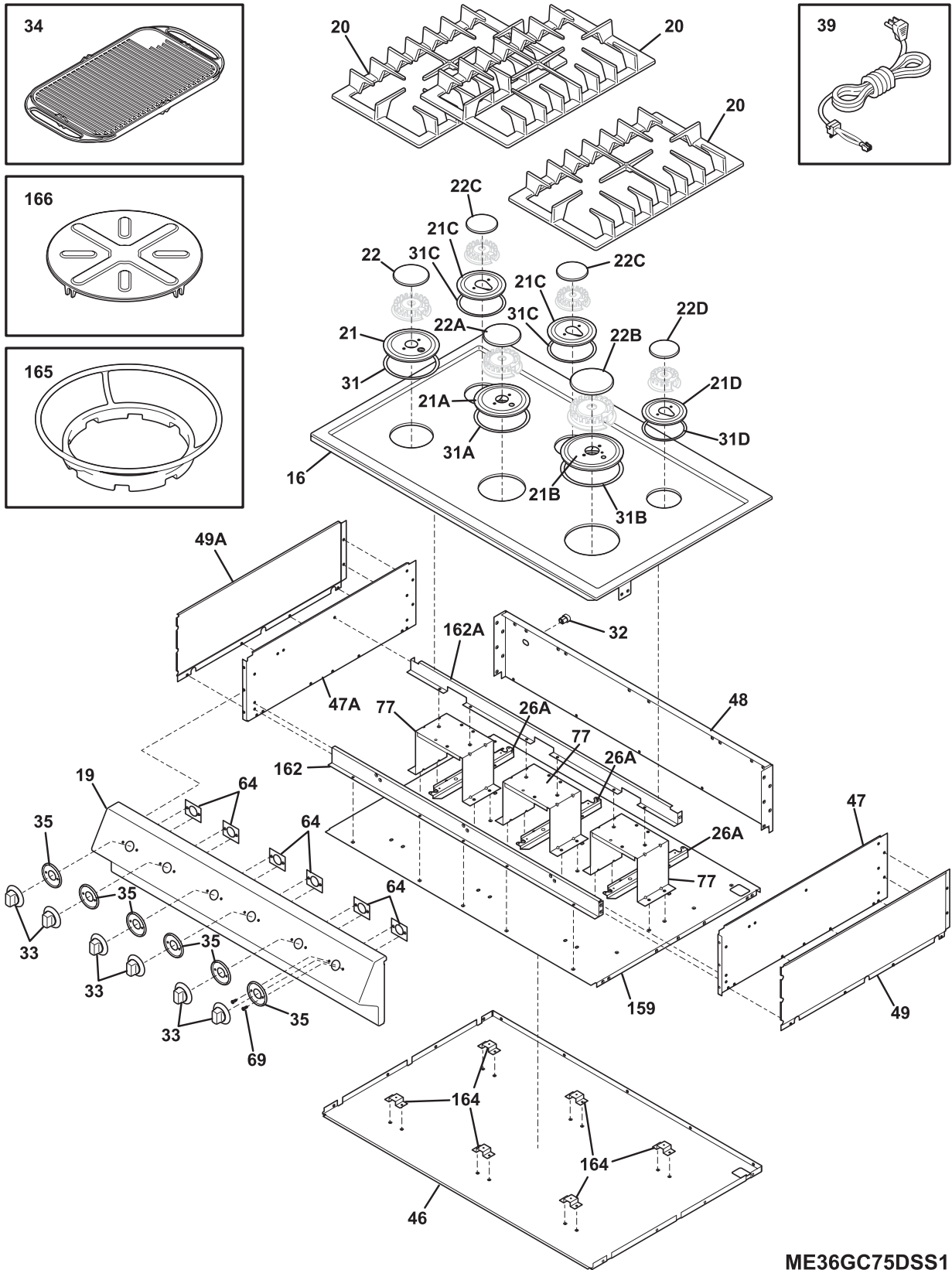
## **36" GAS COOK-TOP**

Model No.  
**E36GC75D**

This Publication Supersedes  
Publication #5995397378

Copyright © 2007 Electrolux Home Products, Inc.  
All rights reserved.

### COOK TOP



ME36GC75DSS1

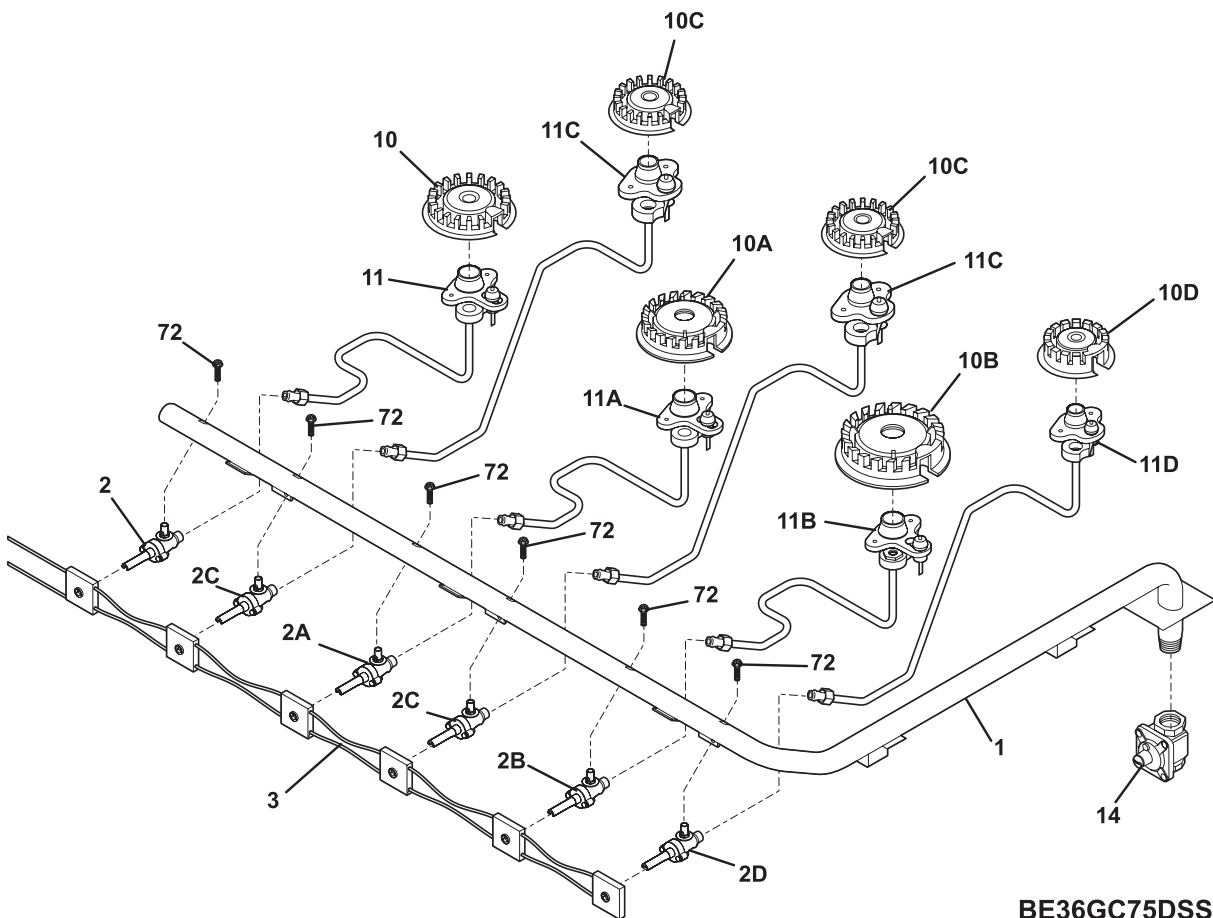
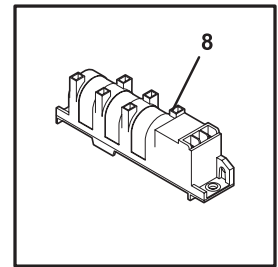
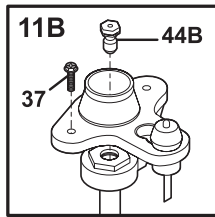
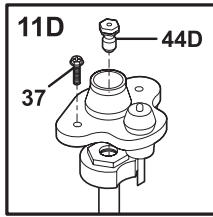
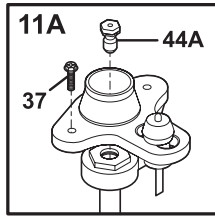
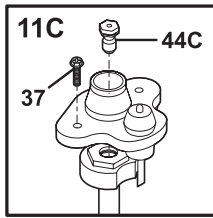
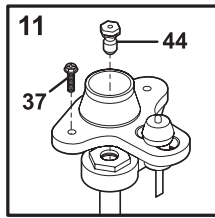
---

**COOK TOP**


---

POS. NO	PART NO.	DESCRIPTION
16	318185203	Main Top Assy, frame/glass, stainless/black
19	318234900	Panel, control, stainless
20	318231600	Grate, burner, black, (3)
21	316241704	Skirt, 12K burner, black
21A	316264903	Skirt, 14K burner, black
21B	316264803	Skirt, 16/17K burner, black
21C	316241804	Skirt, 9.5K burner, black, (2)
21D	316241904	Skirt, 5K burner, black
22	316213605	Cap, 12K burner, black
22A	316219905	Cap, 14K burner, black
22B	316271904	Cap, 16/17K burner, black
22C	316213505	Cap, 9.5K burner, black, (2)
22D	316206604	Cap, 5K burner, black
26A	316242501	Channel, burner support
31	316242001	Seal, 12K burner
31A	316242000	Seal, 14K burner
31B	316242004	Seal, 16/17K burner
31C	316242002	Seal, 9.5K burner
31D	316242003	Seal, 5K burner
32	3201437	Strain relief
33	318242204	Knob, control, (6)
34	318251500	Griddle
35	318251910	Skirt, (6)
39	318144002	Cord, service
46	318242800	Panel, base
47	318241700	Panel, side, RH
47A	318241701	Panel, side, LH
48	318241800	Panel, rear
49	318241900	Panel, interior side, RH
49A	318241901	Panel, interior side, LH
64	318251400	Plate, mtg bezel
69	5303323134	Screw, 8-32 x 3/16
77	318245800	Bracket, channel mtg, (3)
159	318242900	Panel, bottom
162	318245600	Brace, manifold
162A	318245700	Cross Rib
164	318252900	Support, box, (6)
165	318252100	Ring, WOK
166	316279000	Plate, simmer
*	5303323130	Screw, 8 x 1/4, (4)

**BURNER**

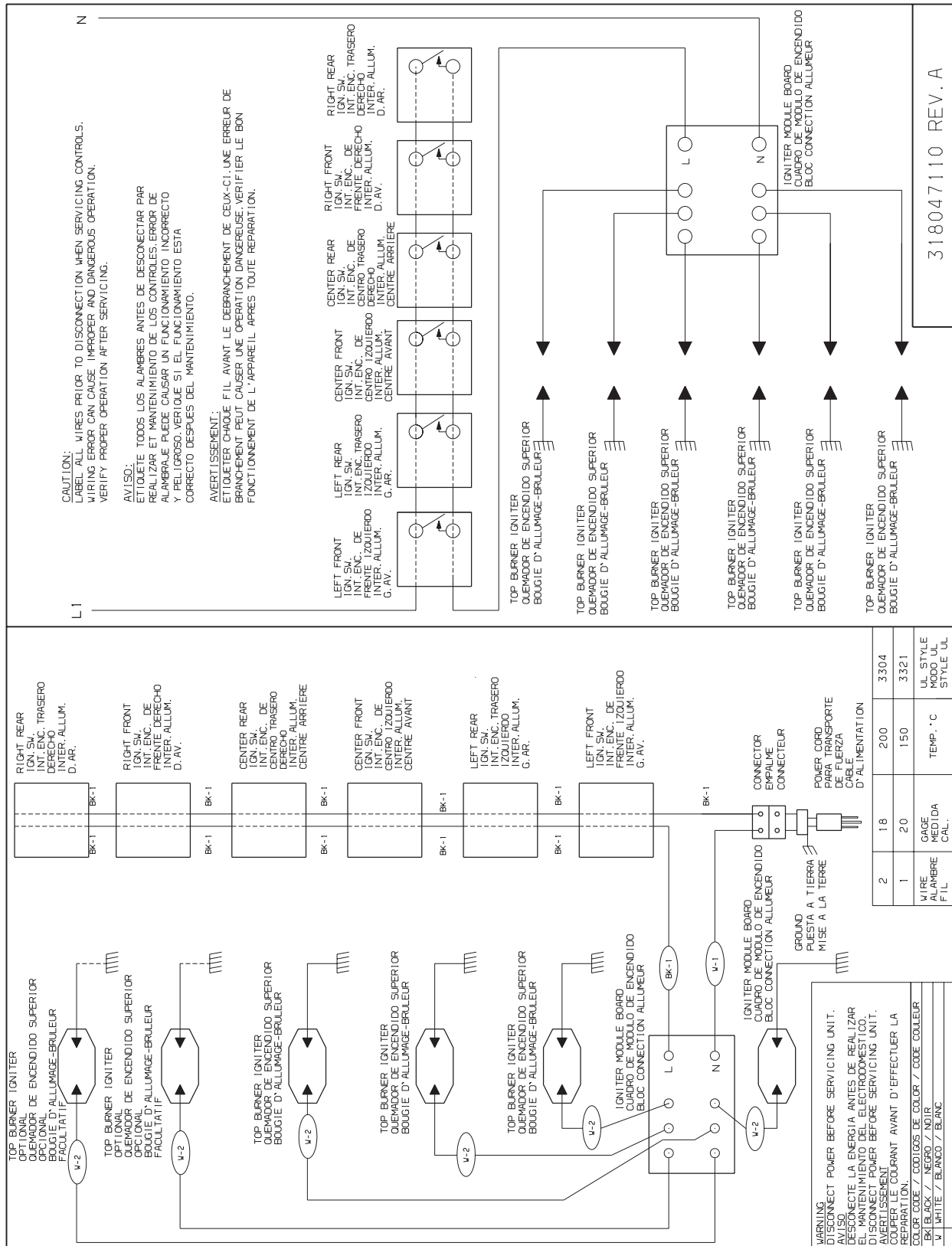


**BE36GC75DSS1**

**BURNER**

POS. NO	PART NO.	DESCRIPTION
1 #	318234300	Manifold Pipe
2 #	318234023	Valve, top burner, 12K
2A #	318234022	Valve, top burner, 14K
2B #	318234021	Valve, top burner, 17K
2C #	318234024	Valve, top burner, 9.5K
2D #	318234025	Valve, top burner, 5K
3 #	318232602	Wiring Harness, w/igntr switch
8	318079001	Module, spark
10 #	316212300	Burner, sealed, 12K
10A#	316223400	Burner, sealed, 14K
10B#	316223300	Burner, sealed, 16/17K
10C#	316212400	Burner, sealed, 9.5K
10D#	316206400	Burner, sealed, 5K
11 #	318221326	Ignitor/orifice assy., top burner, front
11A#	318221327	Ignitor/orifice assy., top burner, front
11B#	318221328	Ignitor/orifice assy., top burner, front
11C#	318221324	Ignitor/orifice assy., top burner, rear, 9.5K, w/holder, tube
11D#	318221325	Ignitor/orifice assy., top burner, rear, 5K, w/holder, tube
14 #	316278900	Regulator, pressure
37	316240600	Screw, assy mtg, ignitor/orifice
44	316237901	Orifice, top burner, 12K
44A	316237900	Orifice, top burner, 14K
44B	316237909	Orifice, top burner, 17.2K
44C	316237902	Orifice, top burner, 9.5K
44D	316237903	Orifice, top burner, 5K
72	316215600	Screw, valve mtg., 1/4 - 20
* #	318127416	LP Conversion Kit
*	318243100	Harness, burner wiring
*	08011955	Screw, 10-24 x 0.375, square drive
*	5303311174	Screw, 10-24 x 3/8
*	5303323130	Screw, 8 x 1/4, (4)

WIRING DIAGRAM



CAUTION: LABEL ALL WIRES PRIOR TO DISCONNECTION WHEN SERVICING CONTROLS. WIRING ERROR CAN CAUSE IMPROPER AND DANGEROUS OPERATION. VERIFY PROPER OPERATION AFTER SERVICING.

AVISO: ETIQUETE TODOS LOS ALAMBRES ANTES DE DESCONECTAR PARA REALIZAR EL MANTENIMIENTO DE LOS CONTROLES. ERROR DE ALAMBRE PUEDE CAUSAR UN FUNCIONAMIENTO INCORRECTO Y PELIGROSO. VERIFIQUE SI EL FUNCIONAMIENTO ESTA CORRECTO DESPUES DEL MANTENIMIENTO.

AVERTISSEMENT: ETIQUETER CHAQUE FIL AVANT LE DEBRANCHEMENT DE CEUX-CI. UNE ERREUR DE BRANCHEMENT PEUT CAUSER UNE OPERATION DANGEREUSE. VERIFIER LE BON FONCTIONNEMENT DE L'APPAREIL APRES TOUTE REPARATION.

318047110 REV. A