

Electrolux

Factory Parts Catalog

Product No.	EI28BS36IB0	EI28BS36IS0	EI28BS36IW0
Series	Mainline	Mainline	Mainline
Color	black	stainless	white
Volts	115	115	115
Owner's Guide	242046401	242046401	242046401
Market	North America	North America	North America
Energy Guide	242028525	242028525	242028525
Service Data Sheet	242046700	242046700	242046700

Electrolux

Electrolux Major Appliances
 North & Latin America
 P.O. BOX 212378
 AUGUSTA, GA 30917

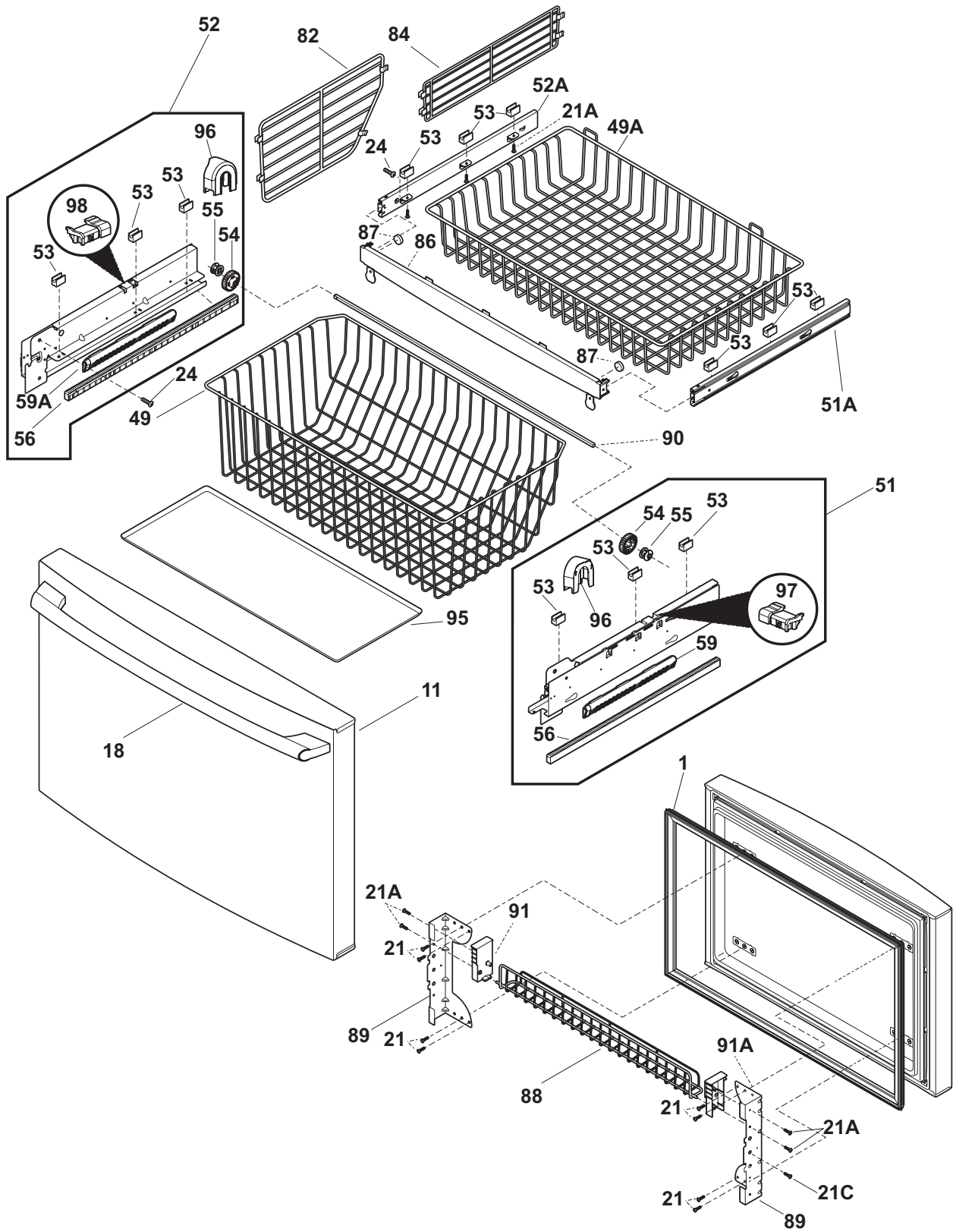
Publication No.
599555538
 09/11/09
 (EN/SERVICE/KHB)
 137

**FRENCH DOOR
 BOTTOM FREEZER
 W/O DISPENSER**

Model No.
EI28BS36I

Copyright © 2009 Electrolux Home Products, Inc.
 All rights reserved.

FREEZER DRAWER, BASKETS



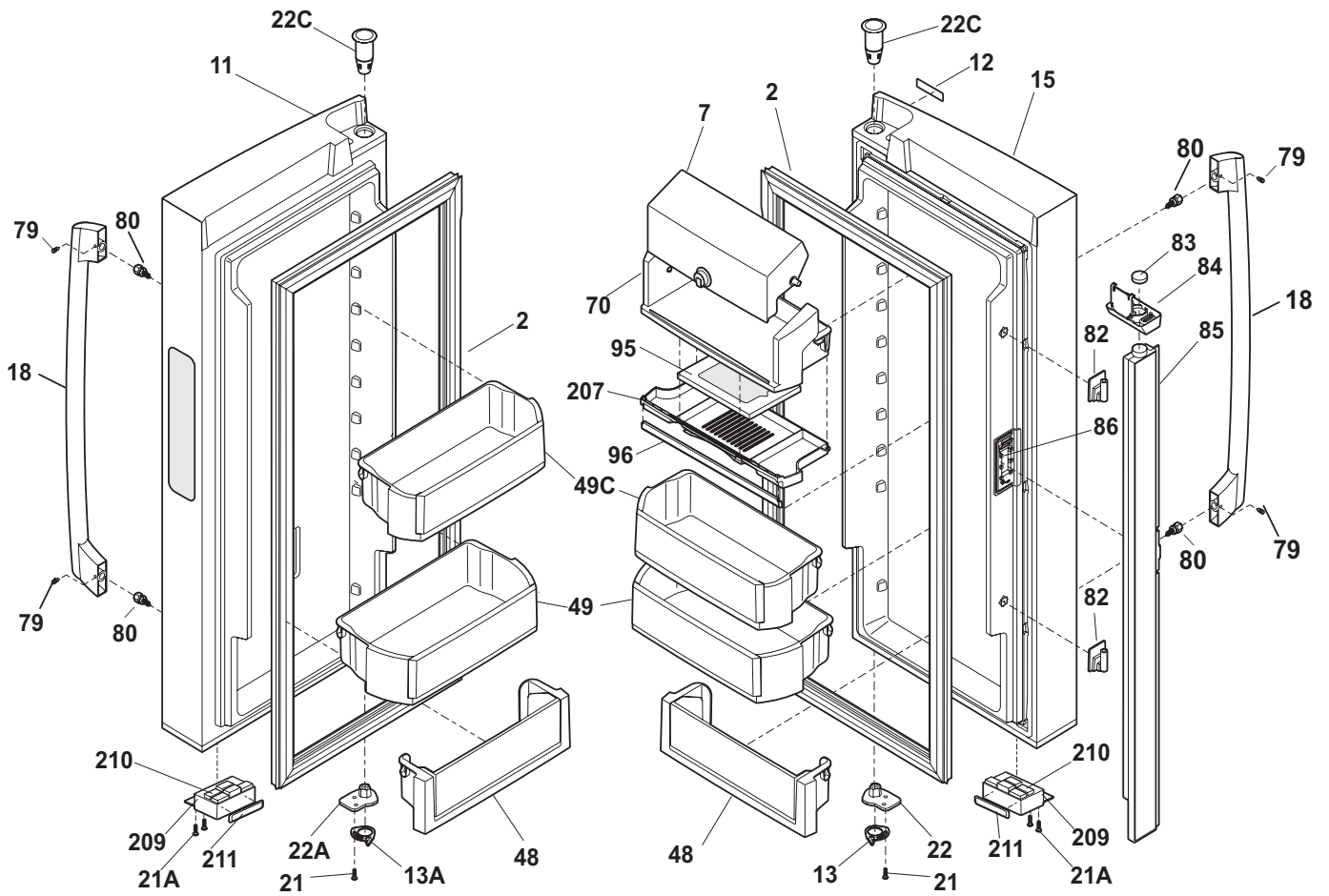
FD58FAABAA0

FREEZER DRAWER, BASKETS

Model Index: A EI28BS36I (EI28BS36IB0)
 B EI28BS36I (EI28BS36IS0)
 C EI28BS36I (EI28BS36IW0)

POS. NO	PART NO.		DESCRIPTION
1 #	241778304	A - -	Gasket-frzr drawer, black, magnetic
1 #	241778302	- B C	Gasket-frzr drawer, white, magnetic
11	241987902	A - -	Drawer, freezer
11	241987903	- B -	Drawer, stainless, freezer
11	241987901	- - C	Drawer, white, freezer
11*	241979601	A B C	Bumper, rubber
18	241881323	A - -	Handle-frzr drawer, black
18	241881310	- B -	Handle-frzr drawer, stainless
18	241881324	- - C	Handle-frzr drawer, white
18*	218755504	A B C	Screw-shoulder, #10 AB, handle mounting
18*	241601002	A B C	Wrench, allen
21	240383407	A B C	Screw, truss hd quad, #10-16 x .500, white
21A	241953902	A B C	Screw, #8 - 18 X .380
21C	241899701	A B C	Screw-#10-32 x 3/8 TRUSS HEAD, truss head, #10-32 x 3/8, zinc
24	240383406	A B C	Screw, truss hd quad, #10-16 x .500, zinc
49	242026801	A B C	Basket-frzr, lower
49A	241780805	A B C	Basket-frzr, upper
51	241883601	A B C	Slide Assembly, basket lower, RH, freezer drawer
51*	242039701	A B C	Screw
51A	241894201	A B C	Slide Assembly, basket, RH, freezer drawer
52	241883701	A B C	Slide Assembly, basket lower, LH, freezer drawer
52A	241894203	A B C	Slide Assembly, basket, LH, freezer drawer
53	241824201	A B C	Retainer-basket
54	241770201	A B C	Pinion
55	241770301	A B C	Pinion-idler
56	241762801	A B C	Rack, drawer travel
59	241979702	A B C	Closure, drawer
59A	241979701	A B C	Closure, drawer
82	242026901	A B C	Divider, basket
82*	241999901	A B C	Guide, divider, plastic (ABS), lower
82*	241999902	A B C	Guide, divider, plastic (ABS), lower, LH
84	241780901	A B C	Divider, basket, upper
86	241953202	A B C	Bar, stabalizer, freezer drawer
87	241812202	A B C	Magnet, freezer drawer
88	241824002	A B C	Rack-tilt out, door
89	241972301	A B C	Bracket-freezer drawer
90	241770702	A B C	Bar, timing
90*	242011101	A B C	Pin-lock
91	241824102	A B C	Cap-door rack
91A	241824101	A B C	Cap, door rack, white
95	241770802	A B C	Tray, spill guard
96	241973501	A B C	Cover, pinion, white
97	241926401	A B C	Actuator, RH, white, light
98	241926402	A B C	Actuator, LH, white, light

FRESH FOOD DOOR



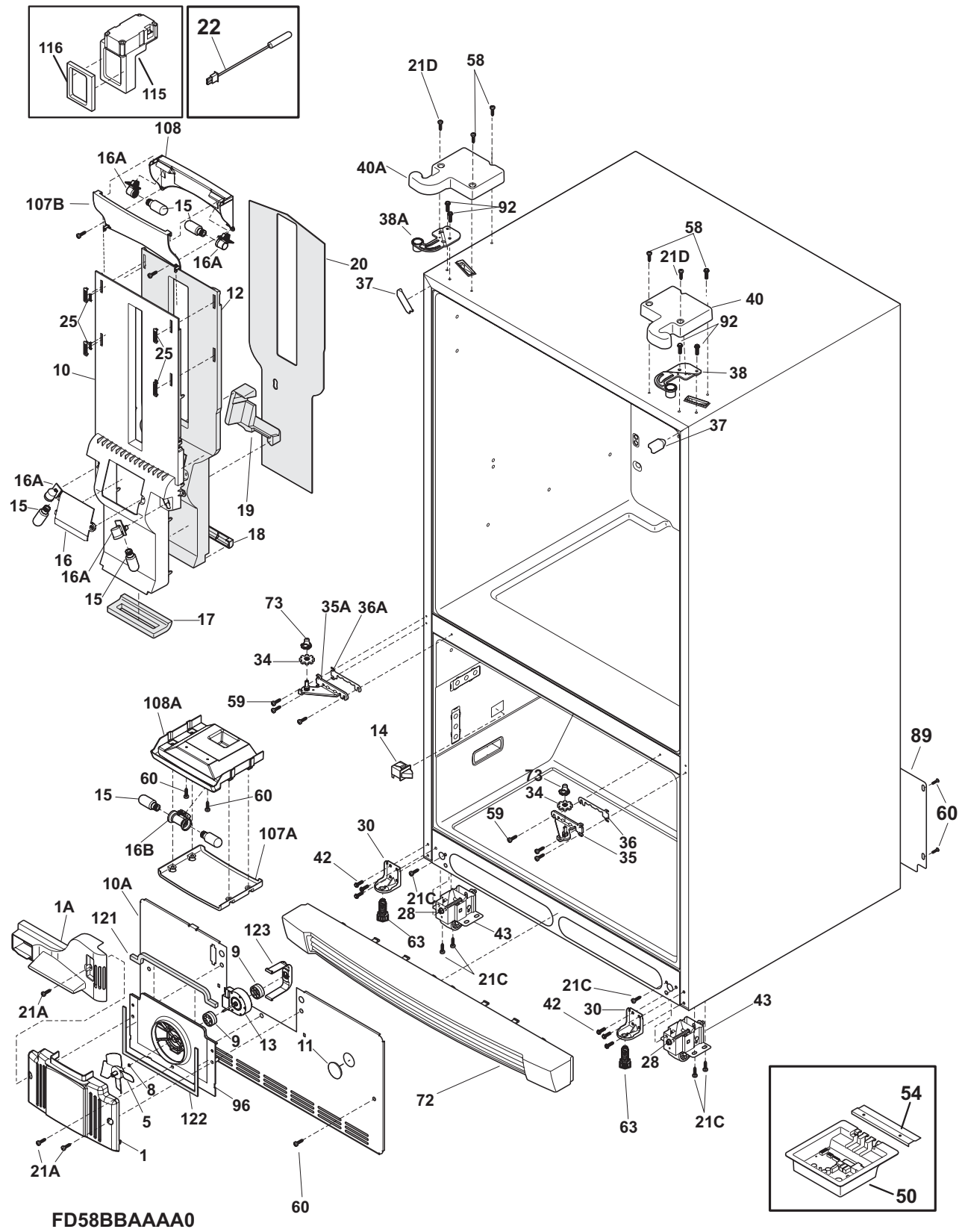
FD58RAACAA0

FRESH FOOD DOOR

Model Index: A EI28BS36I (EI28BS36IB0)
 B EI28BS36I (EI28BS36IS0)
 C EI28BS36I (EI28BS36IW0)

POS. NO	PART NO.		DESCRIPTION
2 #	241778303	A - -	Gasket-refr door, black, magnetic
2	241778301	- B C	Gasket-door, white
7	241804701	A B C	Door-dairy
7*	241641501	A B C	Screw
7*	241836301	A B C	Knob-dairy door
7*	241836401	A B C	Latch-door
11	241988021	A - -	Door-refr, black, LH
11	241988023	- B -	Door-refr, stainless, LH
11	241988019	- - C	Door-refr, black, LH
12	241873302	A - -	Nameplate, black
12	241873301	- B -	Nameplate, Electrolux, stainless
12	241873303	- - C	Nameplate, white
13	241868401	A B C	Door Stop, refrig RH, plated
13A	241868402	A B C	Door Stop, refr LH, plated
15	241988020	A - -	Door-refr, black, RH
15	241988022	- B -	Door-refr, stainless, RH
15	241988018	- - C	Door-refr, white, RH
18	241881321	A - -	Handle-refr door, black, (2)
18	241881309	- B -	Handle-refr door, stainless
18	241881322	- - C	Handle-refr door, white
18*	241601002	A B C	Wrench, allen
21	242017501	A B C	Screw, 10-32 x 0.750
21A	241953901	A B C	Screw, #8-18
22	242075601	A B C	Cam, upper hinge, RH
22A	242075602	A B C	Cam, upper hinge, LH
22C	241760401	A B C	Bearing, hinge, top
48	241804301	A B C	Bin-door, can
49	241804001	A B C	Bin-door, gallon
49C	241896101	A B C	Bin-door, 1/2 gallon
70	241804602	A B C	Compartment-dairy, removable
70*	241995401	A B C	Divider-dairy compt, 70*
79	218755401	A B C	Screw-set, 10-32 x 0.375
80	218755504	A B C	Screw-shoulder, #10 AB, handle mounting
82	241779401	A B C	Hinge-mullion, upper/lower, flipper
83	241812201	A B C	Magnet, door
84	241779702	A B C	GUIDE-MULLION FLIPPER
85	241778801	A B C	Flipper mullion assembly
86	241779801	A B C	Hinge-mullion, center, flipper
95	241754001	A B C	Filter-air
96	242048001	A B C	Trim-door air filter, w/graphics
207	242047901	A B C	Housing-air filter
209	242021002	A - -	Housing-magnet, black
209	242021001	- B C	Housing-magnet, white
210	241779101	A B C	Magnet, door
210	241779103	A B C	Magnet, door
211	241979601	A B C	Bumper, rubber
* #	241788402	A B C	Harness-wiring, flipper mullion
* #	242045401	A B C	Harness-wiring, door
*	242064001	A B C	Screw
*	241891401	A B C	Cover-light, LED

CABINET

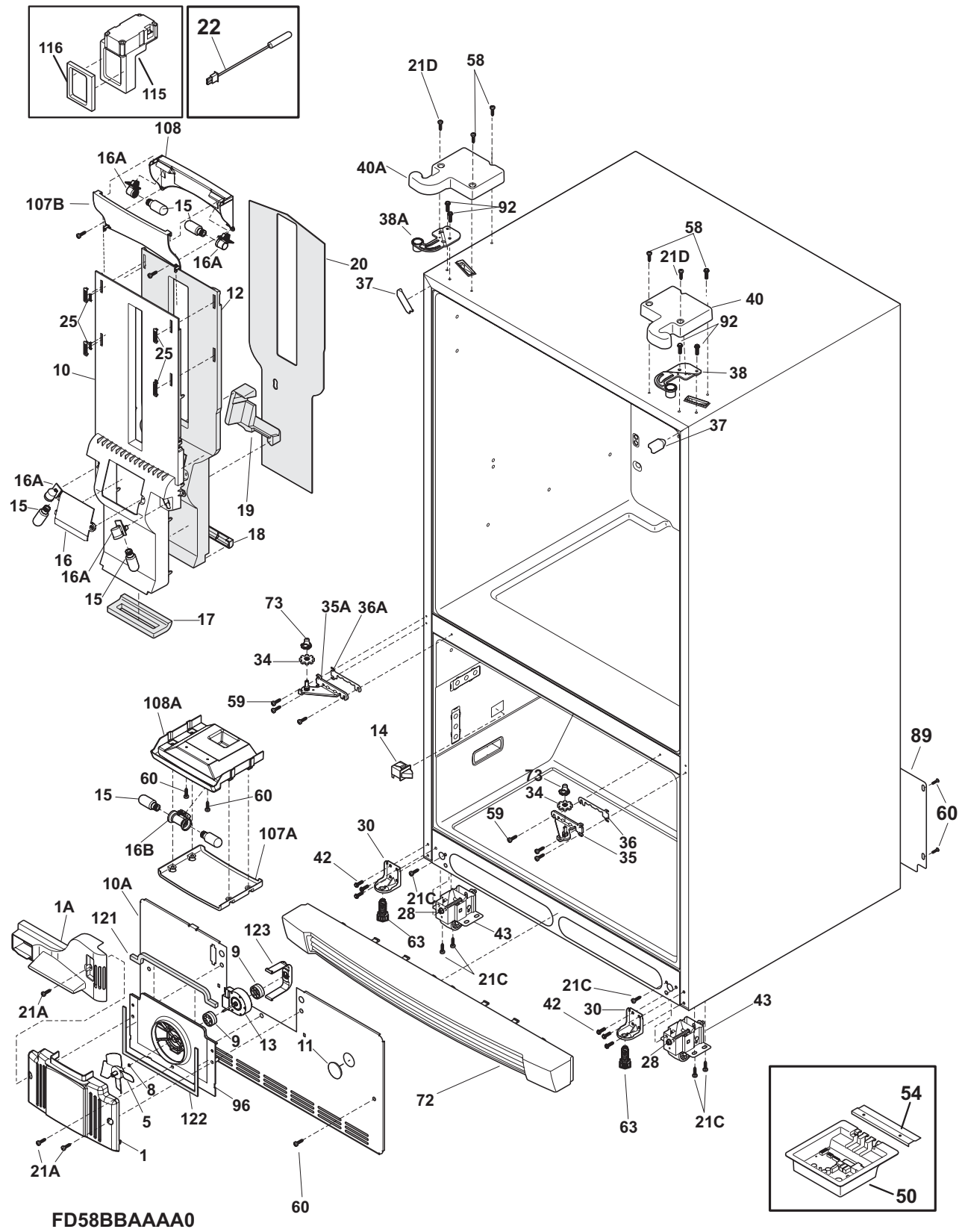


CABINET

Model Index: A EI28BS36I (EI28BS36IB0)
 B EI28BS36I (EI28BS36IS0)
 C EI28BS36I (EI28BS36IW0)

POS. NO	PART NO.		DESCRIPTION
1	241859701	A B C	Cover-fan
1A	242052101	A B C	Duct-air
5	5308000010	A B C	Fan Blade, red, evaporator fan
8	215474201	A B C	Washer, "slinger", nylon, evap fan shaft
9	241518301	A B C	Bushing, motor mounting
10	242058501	A B C	Cover-air duct
10A	241860402	A B C	Cover-evap coil, lower
10A*	241860104	A B C	Gasket-coil cover
10A*	241860105	A B C	Gasket-coil cover
11	5303208309	A B C	Plug-hole, factory test
12	242073901	A B C	Foam-air supply
13	241509402	A B C	Motor, evaporator fan
14	240505801	A B C	Switch, light/lamp
15	241552801	A B C	Light Bulb
16	241860501	A B C	Cover-damper
16*	241859801	A B C	Cover-EPS, damper
16*	241953904	A B C	Screw, #8-18
16A	240590401	A B C	Socket-light, top & mid
16A*	241969202	A B C	Harness-wiring, top light
16A*	242045502	A B C	Harness-wiring
16B#	241622802	A B C	Socket-light, frz light
16B*	241510802	A B C	Harness-wiring, frz light
17	241928201	A B C	Gasket-air duct
18	241928101	A B C	Duct-air
19	241871901	A B C	Support-EPS damper
20	241922901	A B C	Cover-air duct, rear
21A	241953901	A B C	Screw, #8-18
21C	218252201	A B C	Screw, #8 truss hd, 10-32CA x 0.500
21D	241548003	A B C	Screw, 10-32 x 3/8
22	240597203	A B C	Sensor
25	241949501	A B C	Clip, air vent
28	240335502	A B C	Bolt-roller adj, hex washer head, 1/4-20 x 4.020, (2), special
30	241778701	A B C	Bracket-anti tip
34	241868301	A B C	Washer
35	241763003	A - -	Bracket-lower hinge, RH, w/hinge pin
35	241763001	- B C	Bracket-lower hinge, RH, w/hinge pin
35A	241763004	A - -	Bracket-lower hinge, LH, w/hinge pin
35A	241763002	- B C	Bracket-lower hinge, white
36	241868201	A B C	Spacer, door, lower RH
36A	241868202	A B C	Spacer, door, lower LH
37	240337610	A - -	Trim-cabinet corner, black, (2)
37	240337612	- B -	Trim-cabinet corner, nickeloid, (2)
37	240337608	- - C	Trim-cabinet corner, white, (2)
38	241761301	A B C	Bracket-upper hinge, RH
38A	241761302	A B C	Bracket-upper hinge, LH
40	241761509	A - -	Cover-upper hinge, black, RH
40	241761507	- B -	Cover-upper hinge, gray
40	241761511	- - C	Cover-upper hinge, white

CABINET

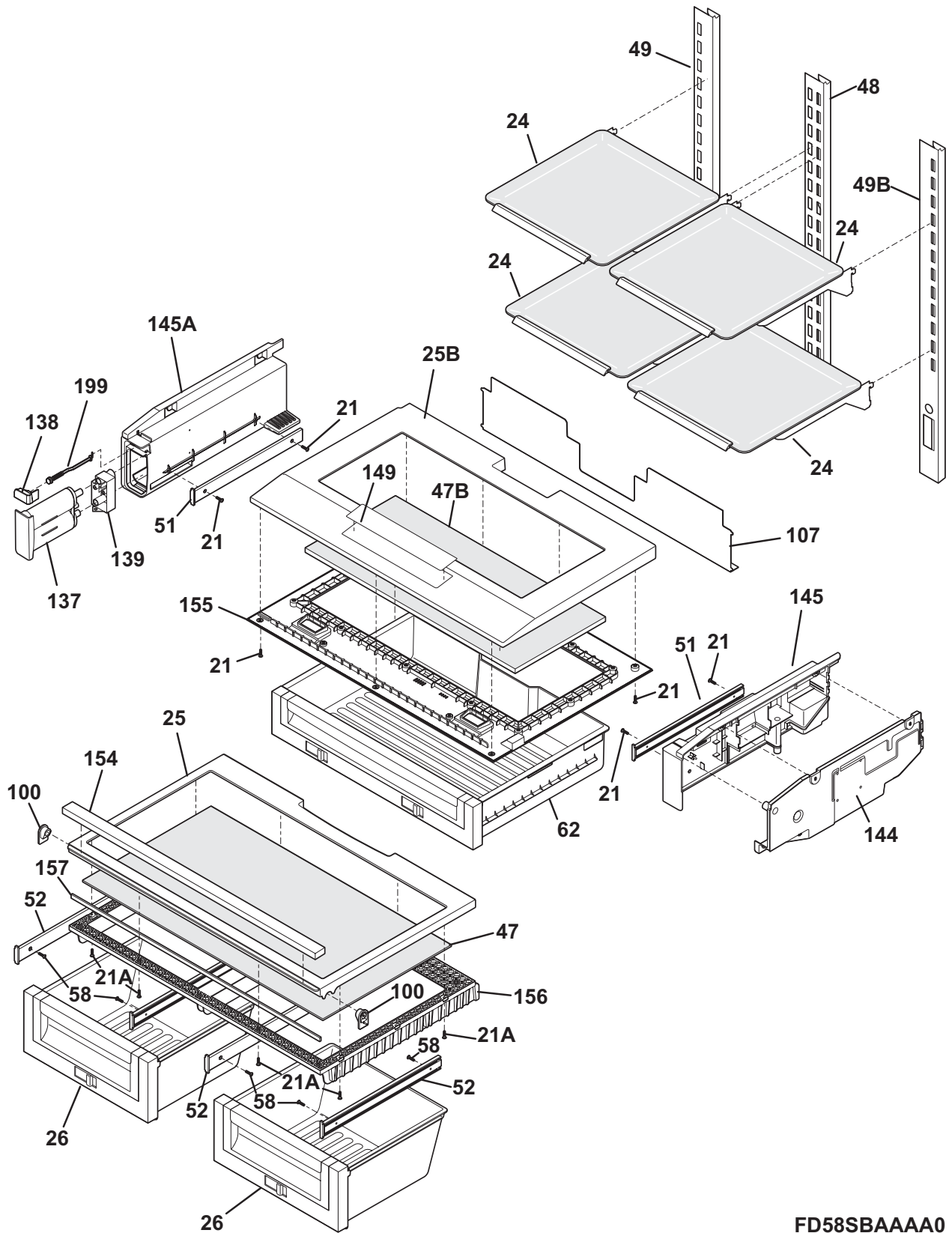


CABINET

Model Index: A EI28BS36I (EI28BS36IB0)
 B EI28BS36I (EI28BS36IS0)
 C EI28BS36I (EI28BS36IW0)

POS. NO	PART NO.		DESCRIPTION
40A	241761510	A - -	Cover-upper hinge, black, LH
40A	241761508	- B -	Cover-upper hinge, gray
40A	241761512	- - C	Cover-upper hinge, white
42	240578902	A B C	Screw, hex head, 1/4-20 x 5/8
43	240335006	A B C	Roller Assy, front, (2)
50	241996316	A B C	Board-main power
50*	242068401	A B C	Harness-wiring
54	241532401	A B C	Channel
58	218781101	A B C	Screw, pan head, 8-18 x 0.625
59	240442707	A - -	Screw-#10-32 X 3/4, black
59	240442708	- B C	Screw-#10-32 X 3/4, white
60	241500303	A B C	Screw, hex washer head, 8-18AB x 0.500
63	216396900	A B C	Screw, leveling foot, plastic, adjustable
72	241930302	A - -	Grille/Kickplate, black
72	241930301	- B -	Grille/Kickplate
72	241930303	- - C	Grille/Kickplate, white
73	242075701	A B C	Cam-lower hinge
89	241733905	A B C	Cover-access, w/label
92	241710601	A B C	Screw, hex washer hd, 1/4 x 7/8, hinge mtg
96	241860601	A B C	Shroud-evap fan mtg
107A	241971601	A B C	Shield-light, frzr
107B	241971201	A B C	Shield-light, top air duct
108	241971401	A B C	Cover-wiring, top air duct
108A	241971801	A B C	Cover-wiring, freezer light
115	241518501	A B C	Damper, motorized
116	241518601	A B C	Seal-damper, foam
121	241860103	A B C	Gasket-evap, upper
122	241860102	A B C	Gasket-evap, bottom
123	241517701	A B C	Clip, evap fan motor
*	240479601	A B C	Plug, button, cab liner holes
*	241953905	A B C	Screw, 8-18 X 1.25
*	241969001	A B C	Cap, screw
*	242006901	A B C	Duct-air, freezer
*	5303321321	A - -	Paint, touch-up, black
*	5303321319	- - C	Paint, touch-up, white

SHELVES



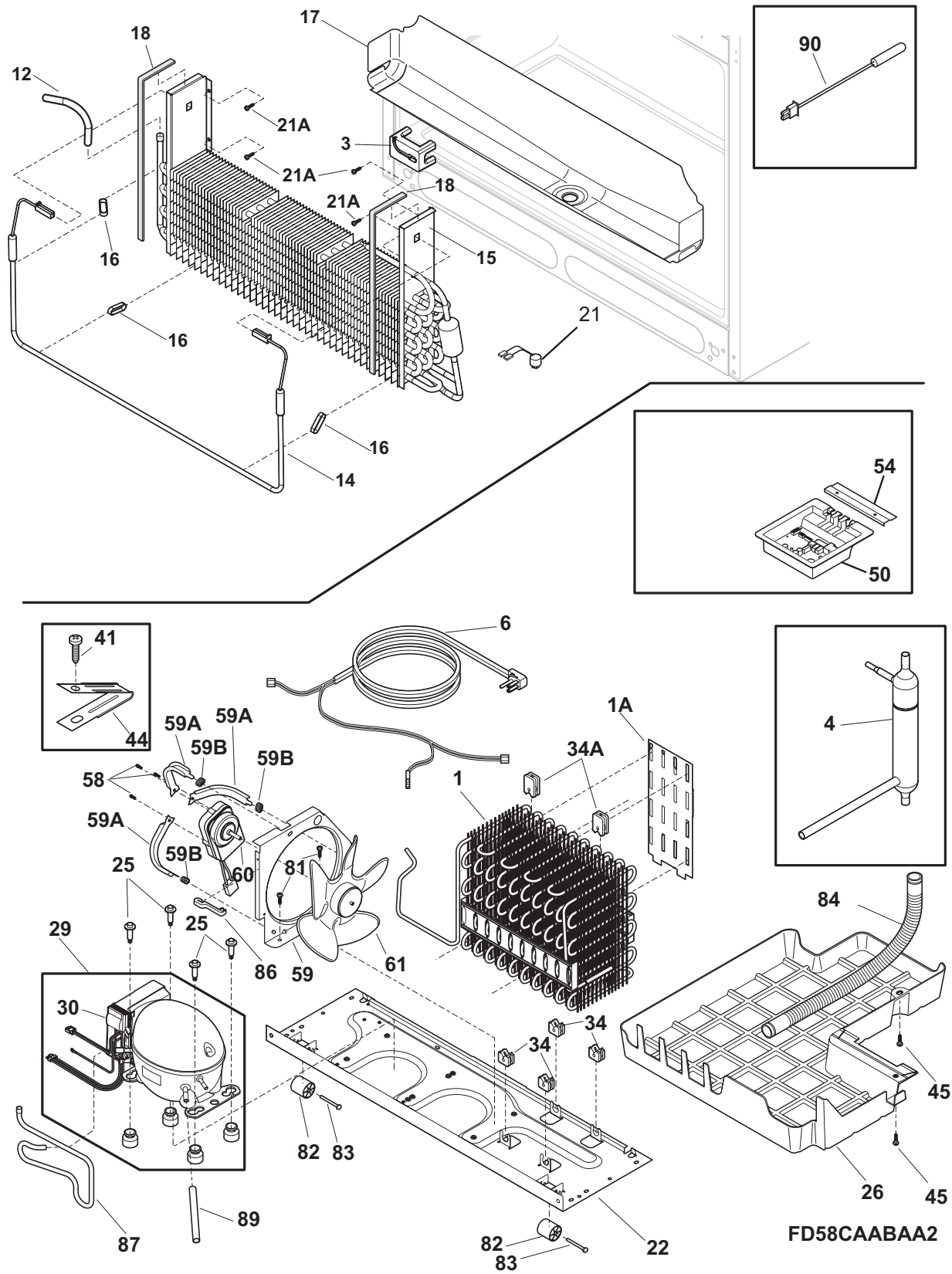
FD58SBAAAA0

SHELVES

Model Index: A EI28BS36I (EI28BS36IB0)
 B EI28BS36I (EI28BS36IS0)
 C EI28BS36I (EI28BS36IW0)

POS. NO	PART NO.		DESCRIPTION
21	241953902	A B C	Screw, #8 - 18 X .380
21A	241953901	A B C	Screw, #8-18
24	241839901	A B C	Shelf-glass, formed
24*	241809203	A B C	• Trim-shelf, hand grip
25	241802202	A B C	Frame-crisper cover, upper
25*	242010901	A B C	Roller Assy, deli pan
25B	241803302	A B C	Frame-deli cover, upper
26	241772801	A B C	Pan-crisper
47	241768801	A B C	Insert-pan cover, glass
47B	241967401	A B C	Glass, 2 pane insulatd
47B*	5304469950	A B C	Sealant, rubber silicone
48	241774201	A B C	Channel-shelf mtg, center
49	241773802	A B C	Channel-shelf mtg, side, LH
49B	241774301	A B C	Channel-shelf mtg, side, RH
51	241816102	A B C	Slide-deli
52	241769001	A B C	Slide-crisper cover
58	241941202	A B C	Screw, 8-18 x 3/8
62	241827204	A B C	Pan-deli
100	241768601	A B C	Support-crspr cover
107	241925901	A B C	Cover-water tank
137	241932301	A B C	Filter, water, carbon cassette, front, with o'rings
137*	240526901	A B C	O-ring, wtr filter base
138	241885901	A B C	Button-filter release
139	242058801	A B C	Base-water filter
139*	241858401	A B C	Screw, #6 x 1/2 HILO
144	241803902	A B C	Cover-deli air control
145	241803802	A B C	Housing-deli air control
145A	242058702	A B C	Support, rail
149	241974501	A B C	Insert-pan cover, plastic
154	241879901	A B C	Trim-crisper cover
155	241803402	A B C	Frame-deli cover, lower
156	241872001	A B C	Frame-crisper cover, lower
157	241872201	A B C	Beam-crisper cover
199	240397501	A B C	Rod
199*	240398401	A B C	Spring-filter release rod

COOLING SYSTEM



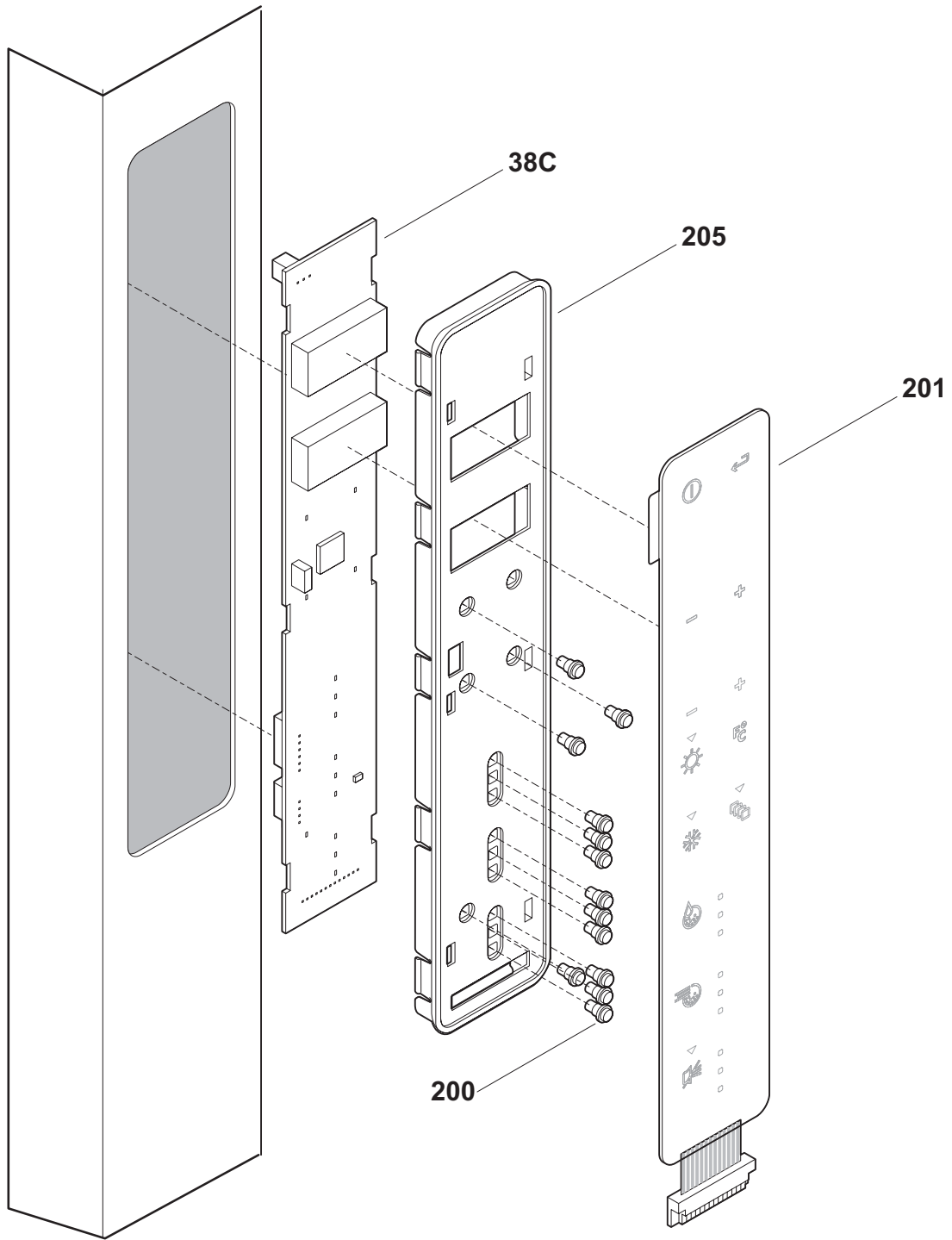
FD58CAABAA2

COOLING SYSTEM

Model Index: A EI28BS36I (EI28BS36IB0)
 B EI28BS36I (EI28BS36IS0)
 C EI28BS36I (EI28BS36IW0)

POS. NO	PART NO.		DESCRIPTION
1 #	241862901	A B C	Condenser
1A	241987301	A B C	Deflector-air, condenser
3	241838401	A B C	Block-evap coil, styrofoam insul, RH
4 #	242047601	A B C	Drier-filter
6 #	241516901	A B C	Cord-service
6*	241510904	A B C	Harness-dispenser
6*	242045301	A B C	Harness-wiring, machine compt
12	242036701	A B C	Tube-jumper, evaporator
14 #	5303918410	A B C	Defrost Heater Kit, 28'
15 #	242044501	A B C	Evaporator
16	5308000110	A B C	Strap-evap/heater, aluminum, (2)
17	241791201	A B C	Trough-drain
18	241860101	A B C	Gasket, closed cell
21 #	242046001	A B C	Thermostat-defrost
21A	218362501	A B C	Screw, hex washer head, 8-18AB x 1.250, spacer, (2)
22	241602112	A B C	Base-compressor, w/rollers
22*	218252201	A B C	Screw, #8 truss hd, 10-32CA x 0.500
25	240491503	A B C	Screw-compressor mtg, 1/4-28 x 1.16, (4)
26	241920601	A B C	Pan-defrost
29 #	5303918437	A B C	Compressor Kit
30 #	241577505	A B C	Invertor
34	241929901	A B C	Grommet-cond mtg, (4)
34A	241929902	A B C	Grommet-cond mtg, (4)
41	240555002	A B C	Screw-#8-32 X 3/8
44	215174700	A B C	Clamp-service cord, strain relief, galv steel
45	5304455650	A B C	Screw, hex washer head, 8-15A x 0.625, low profile
50	241996316	A B C	Board-main power
50*	242068401	A B C	Harness-wiring
54	241532401	A B C	Channel
58	240433203	A B C	Screw, hex washer head, 8-18 x 3/8
59	240315502	A B C	Shroud-cond fan
59*	240346701	A B C	Tape-foam seal, shroud
59A	240346501	A B C	Bracket-support, cond mtr, (3)
59B	240346601	A B C	Grommet-bracket, (3)
60	241584301	A B C	Motor-condenser fan
61	241639501	A B C	Blade-condenser fan
81	240359403	A B C	Screw-fan shroud, (2)
82	5304418225	A B C	Roller, compressor base, rear, (2)
83	5304455655	A B C	Rivet, flat head, 1/4 OD x 1-3/4, roller pin
84	241830902	A B C	Tube-drain, lower
84*	242036801	A B C	Clip-tube, drain
86	240409302	A B C	Spacer-cond tube, black
87	241846302	A B C	Tube-suction, jumper
89	215346900	A B C	Tube-process
90	240597203	A B C	Sensor
90*	241842301	A B C	Cap-thermistor
*	3205266	A B C	Edge Protector, wiring harness
*	218515403	A B C	Clip-grille
*	241947701	A B C	Spacer, heat exchanger
*	5303918445	A B C	Heat Exchanger, suction line
*	5303918428	A B C	Hot Tube Repair Kit, service

CONTROLS



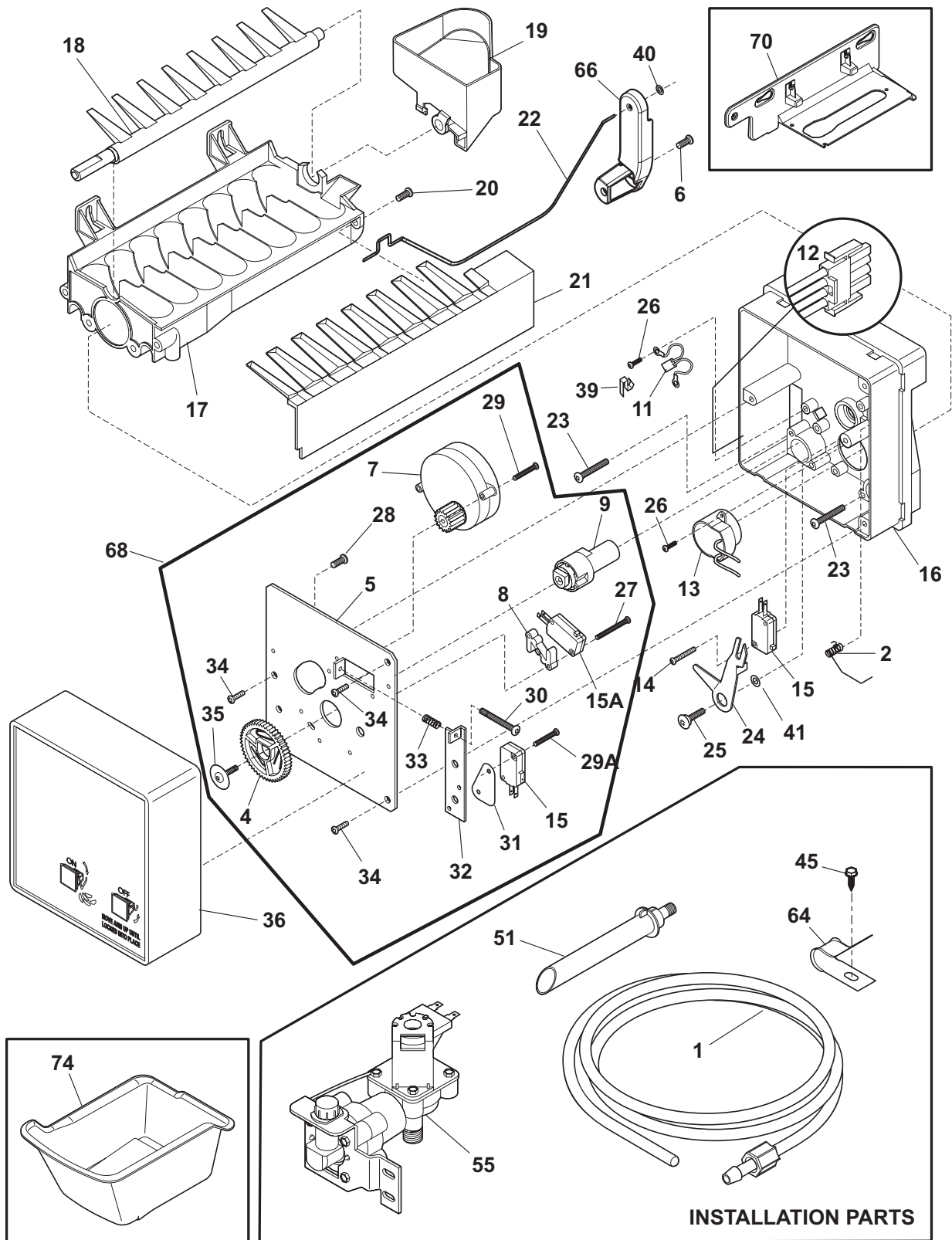
FD58XNDAAA0

CONTROLS

Model Index: A EI28BS36I (EI28BS36IB0)
 B EI28BS36I (EI28BS36IS0)
 C EI28BS36I (EI28BS36IW0)

POS. NO	PART NO.		DESCRIPTION
38C#	242048301	A B C	Board-control
200	241609201	A B C	Light Pipe
201	242041201	A B C	Switch-membrane
205	242041401	A B C	Housing, disp/controls
*	241510904	A B C	Harness-dispenser

ICE MAKER



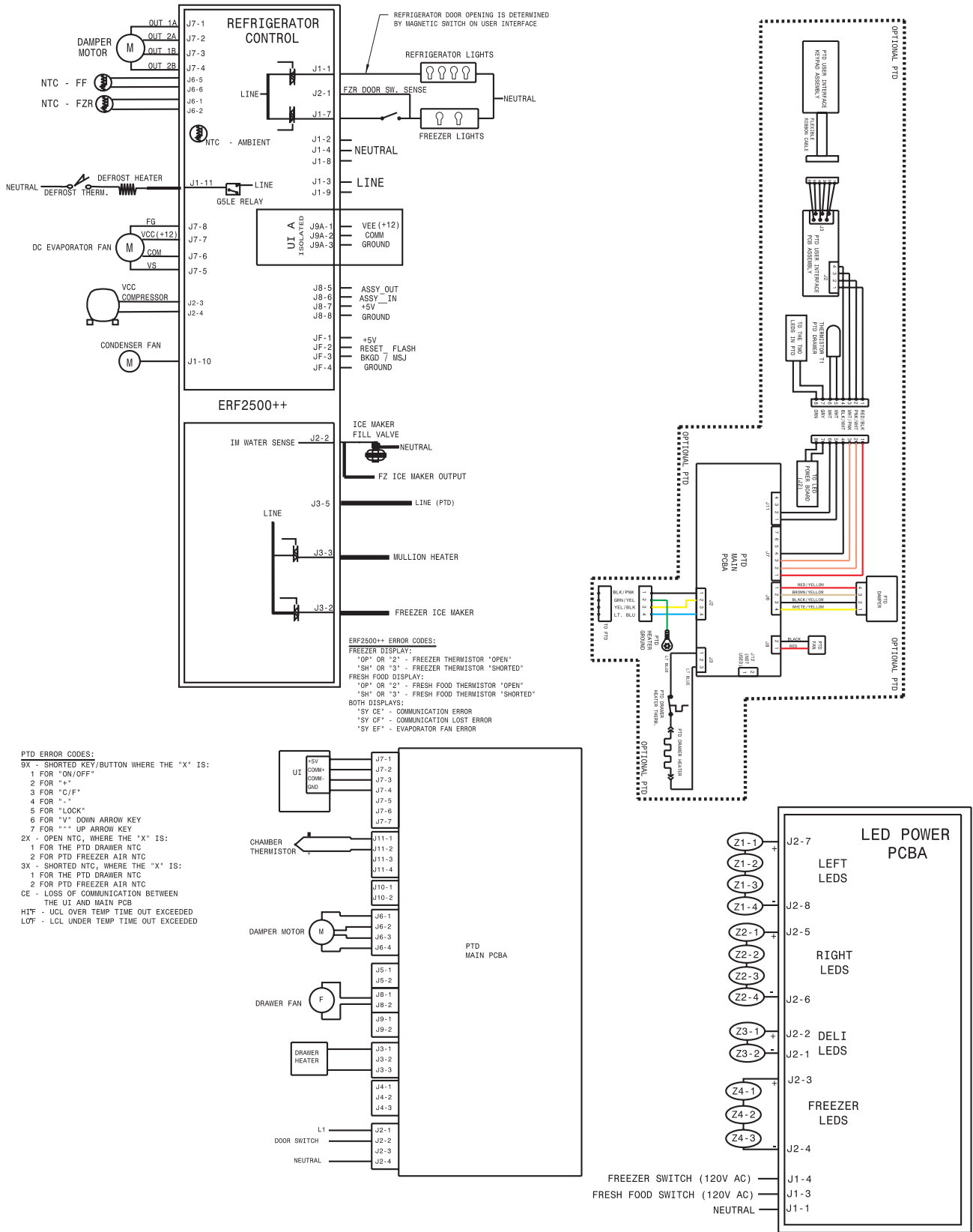
FD58I115BMFlorida

ICE MAKER

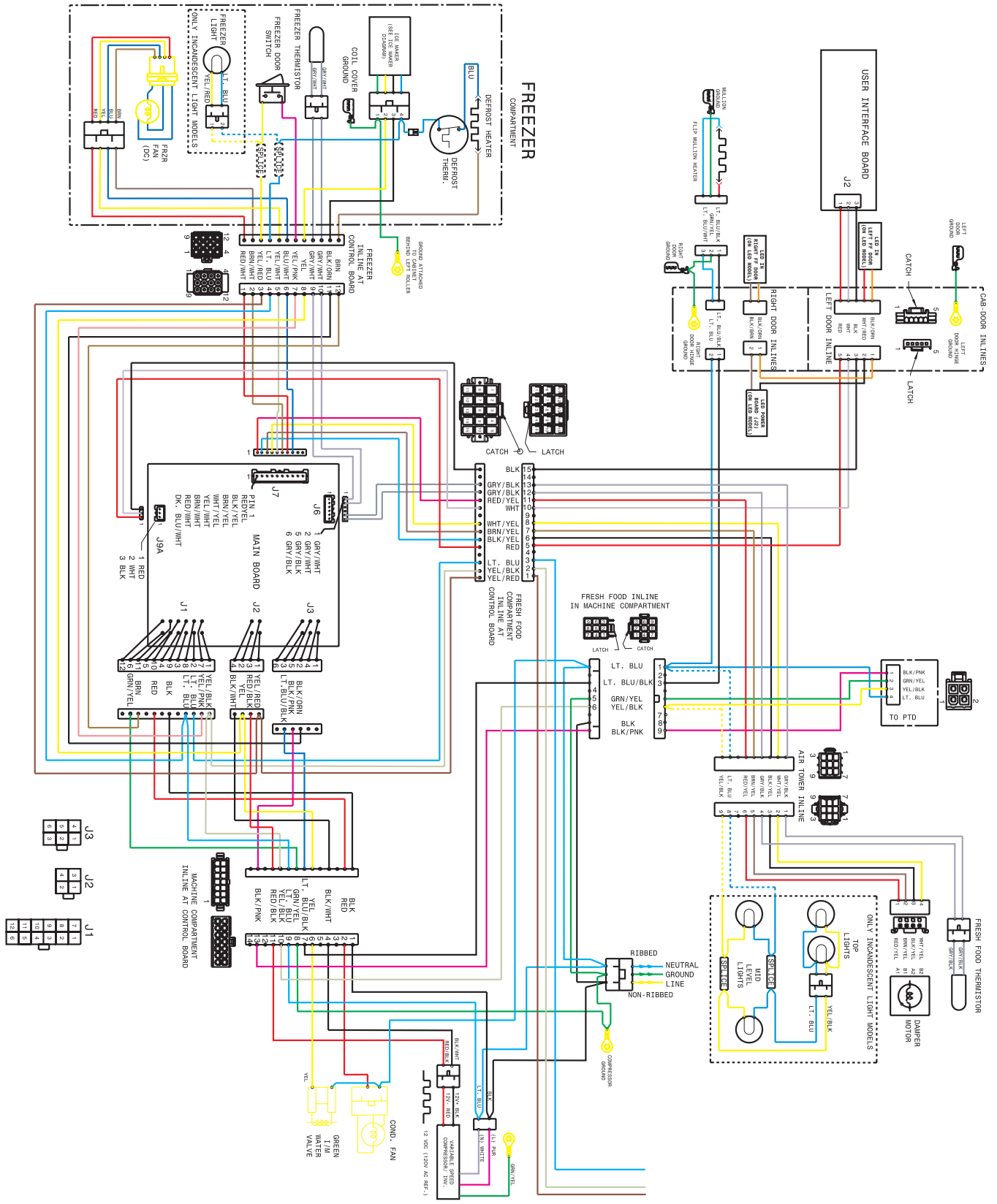
Model Index: A EI28BS36I (EI28BS36IB0)
 B EI28BS36I (EI28BS36IS0)
 C EI28BS36I (EI28BS36IW0)

POS. NO	PART NO.		DESCRIPTION
1	218976804	A B C	Tube-water inlet, valve to I.M.
1*	241964702	A B C	Tube-water
2	5304469396	A B C	Spring-shutoff arm, ice maker
4	5304469403	A B C	Gear
5	5304469399	A B C	Mounting Plate
6	3206305	A B C	Screw-ground wire, 8-32 x 0.250
7 #	5304469407	A B C	Motor-ice maker Svo
8	5304469404	A B C	Spacer-hold switch
9	5304469402	A B C	Cam
11	5304455695	A B C	Thermal Cutoff, ice maker, complete assy
12 #	5304469390	A B C	Harness-wiring
13	5304469387	A B C	Thermostat Assy, ice maker
14	5304469394	A B C	Screw, #5-24 x 3/4
15 #	5304469388	A B C	Switch-micro, 2
15A#	5304469405	A B C	Switch-micro
16	5304469379	A B C	Housing, control
17 #	5304469413	A B C	Mold-ice maker, with heater
18	5304469384	A B C	Ejector-ice
19	242051201	A B C	Cup-water inlet, w/bearing
20	5304469391	A B C	Screw, 8-32 x 3/8
21	5304469378	A B C	Ice Stripper
22	242051301	A B C	Shut-off Arm
23	5304469392	A B C	Screw, mold-to-support, (2)
24	5304469382	A B C	Lever Arm
25	5304469397	A B C	Screw, lever arm/sprt
26	5304469393	A B C	Screw
27	5304469410	A B C	Screw, hold switch mtg, (2)
27*	5304469406	A B C	Insulator
28	5304469414	A B C	Screw, #8-32 x 1/4"
29	5304469409	A B C	Screw
29A	5304469412	A B C	Screw, #4-24 X 3/4"
30	5304469408	A B C	Screw-timing adj, 8-32 x 1.000
31	5304469389	A B C	Spacer-switch
32	5304469400	A B C	Plate-valve switch
33	5304469401	A B C	Spring, timing adjust
34	5304469380	A B C	Screw, #8-10*1/2
35	5304469411	A B C	Screw
36	5304469385	A B C	Cover-ice maker
39	5304469383	A B C	Clamp
40	5304458401	A B C	Clip-retainer
41	5304469381	A B C	Washer, flat
45	5304453923	A B C	SCREW-HEX HD #8 32 X 1/2 /WA.
51	242053201	A B C	Tube-water inlet, plastic
55 #	241803701	A B C	Valve-water, single solenoid, 60 Hz, 105/120 V
55*	218709101	A B C	Screw, hex head, 10-32 x 0.500
64	5304453921	A B C	Clamp-cable
66	242060701	A B C	Bracket-ice maker, shut off arm
68	5304469398	A B C	Mounting Plate, assy
70	242041701	A B C	Bracket-ice maker
70*	241690701	A B C	Screw, hex washer head, 8-32T x 0.375
74	242041901	A B C	Container-ice
*	240352102	A B C	Connector-water, straight
*	240396801	A B C	Clamp, tube/wiring, nylon, black/natural
*	241518001	A B C	Nut, 1/2-20, nylon, water hose, (2)
*	241798219	A B C	Ice Maker, radius cube, 115 V, service

WIRING DIAGRAM



WIRING DIAGRAM



Functional Parts
 * Non-Illustrated Parts

WIRING DIAGRAM

