



FRIGIDAIRE

Factory Parts Catalog

Product No.	FGHS2631PE4A	FGHS2631PF4A	FGHS2631PP4A
Series	Gallery	Gallery	Gallery
Color	black	stainless	white
Volts	115	115	115
Owner's Guide Eng/Spn	A00535101	A00535101	A00535101
Owner's Guide French	A00535401	A00535401	A00535401
Market	North America	North America	North America
Energy Guide	807332435	807332435	807332435
Service Data Sheet	A01461101	A01461101	A01461101
Installation Instructions	241811505	241811505	241811505

Frigidaire

P.O. BOX 8020
CHARLOTTE, NC 28262

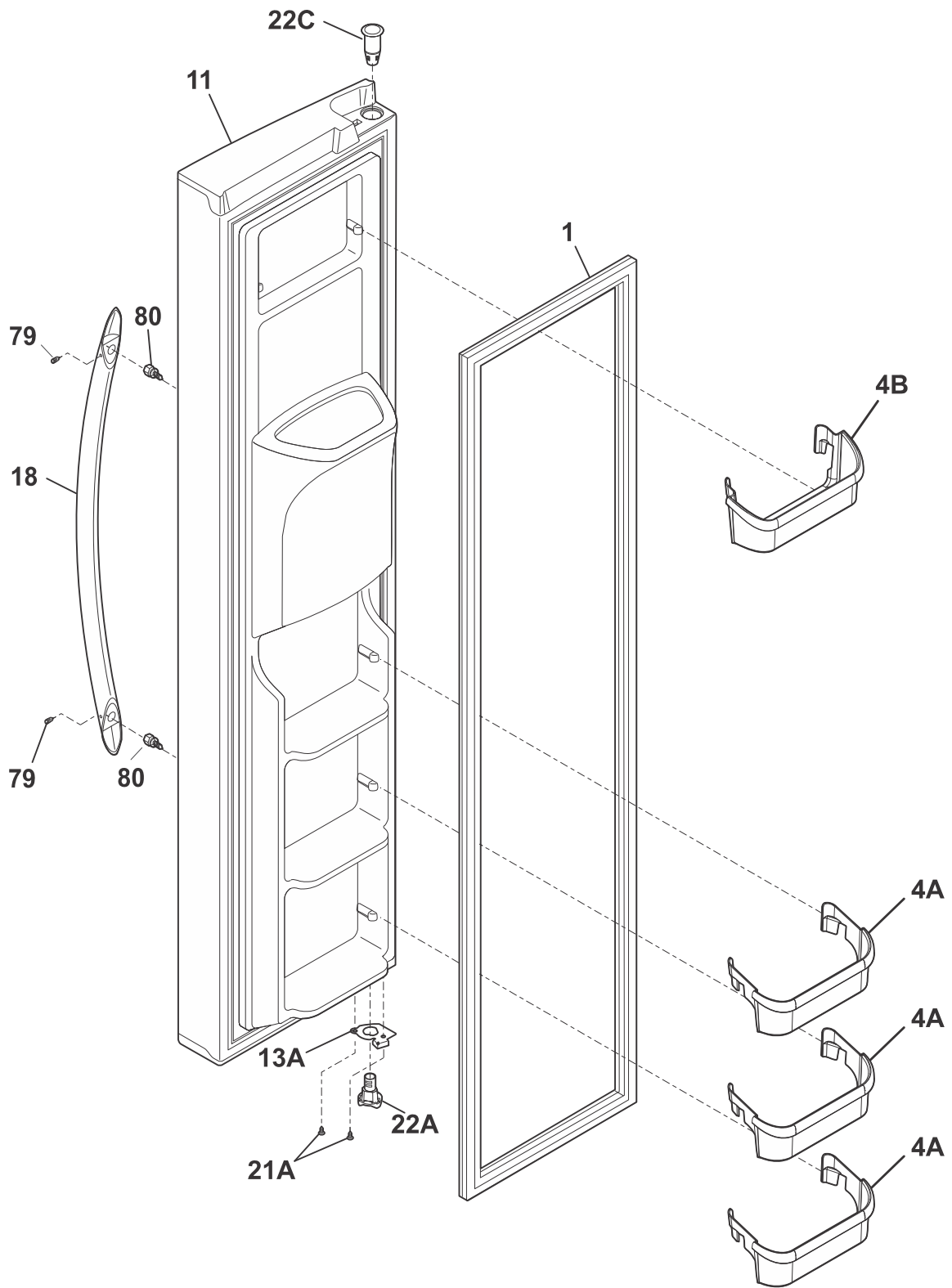
**This Publication Replaces
Publication # 5995650164**

Publication No.
5995674859
16/04/20
(EN/SERVICE/ECL)
137

SIDE-BY-SIDE REFRIGERATOR

Model No.
FGHS2631P

FREEZER DOOR



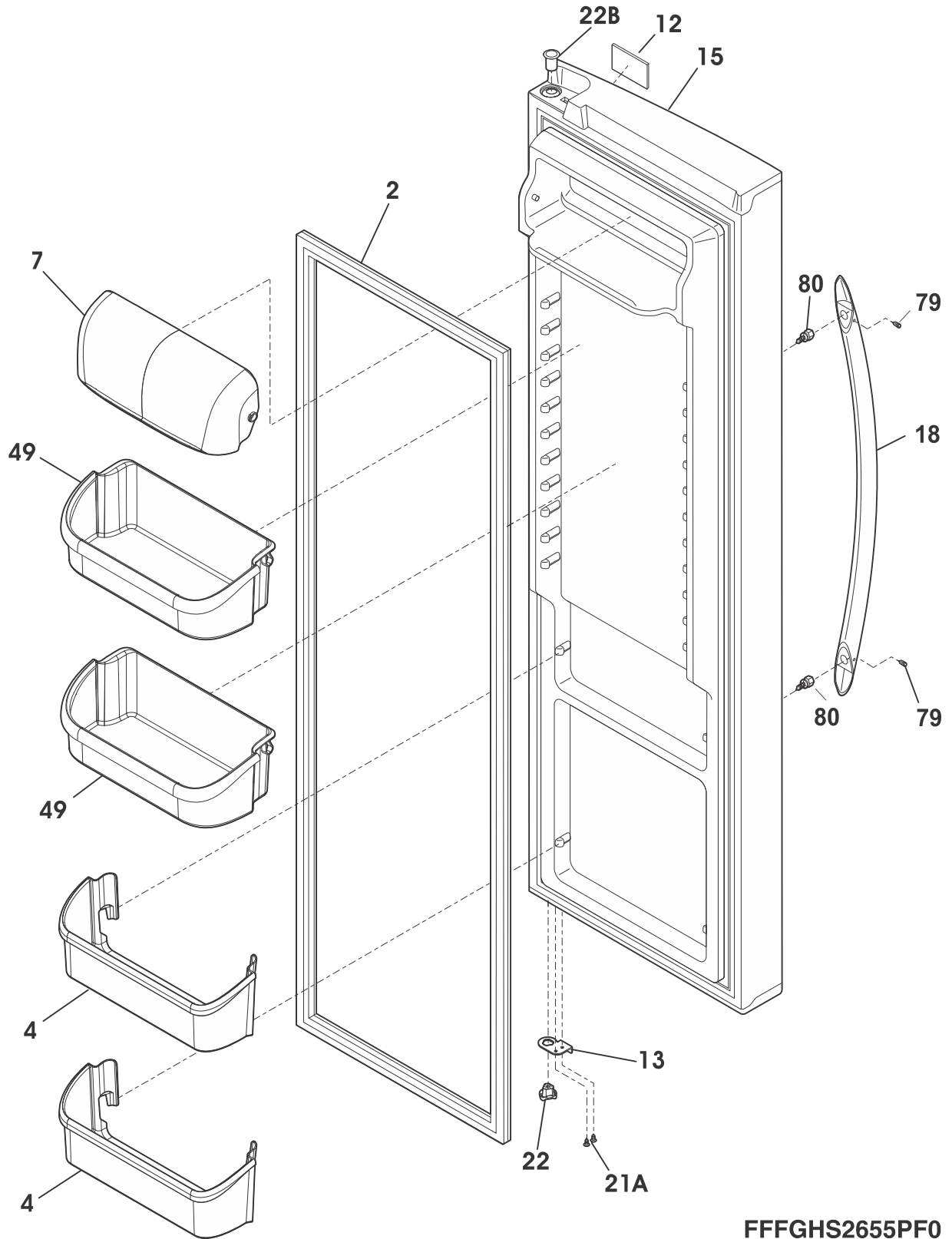
FDGHS2655PF0

FREEZER DOOR

Model Index: A FGHS2631P (FGHS2631PE4A)
 B FGHS2631P (FGHS2631PF4A)
 C FGHS2631P (FGHS2631PP4A)

POS. NO	PART NO.		DESCRIPTION
1 #	241786006	A - -	Gasket-frzr door, black, magnetic
1 #	241786010	- B -	Gasket-frzr door, grey, magnetic
1 #	241786002	- - C	Gasket-frzr door, white, magnetic
4A	240351601	A B C	Bin-door
4B	240334201	A B C	Bin-door, frzr-upper
11	242178018	A - -	Door-frzr, black, complete assy
11	242178016	- B -	Door-frzr, stainless, complete assy
11	242178017	- - C	Door-frzr, white, complete assy
13A	241990202	A B C	Door Stop, black, frzr
18	241930103	A - -	Handle-door, black
18	241930101	- B -	Handle-door, stainless
18	241930102	- - C	Handle-door, white, (2)
18*	241601002	A B C	Wrench, allen
21A	240442706	A B C	Screw-#10-32 X 3/4, zinc
22A	241990302	A B C	Bearing-hinge(frz), closer
22C	241760402	A B -	Bearing, hinge, top
22C	241760401	- - C	Bearing, hinge, top
79	218755408	A B C	Screw-set, 10-32 x 0.375
80	218755504	A B C	Screw, shoulder, #10-AB, handle mounting
* #	807487901	A B C	Harness, wiring, door
* #	5303918371	A B C	Dispenser Heater Kit, 115
*	240451503	A B C	Screw, ind hex wshr hd, 8-32 x 0.375, trilobe
*	242103001	A B C	Connector-water, straight, 5/16 to 5/16

REFRIGERATOR DOOR



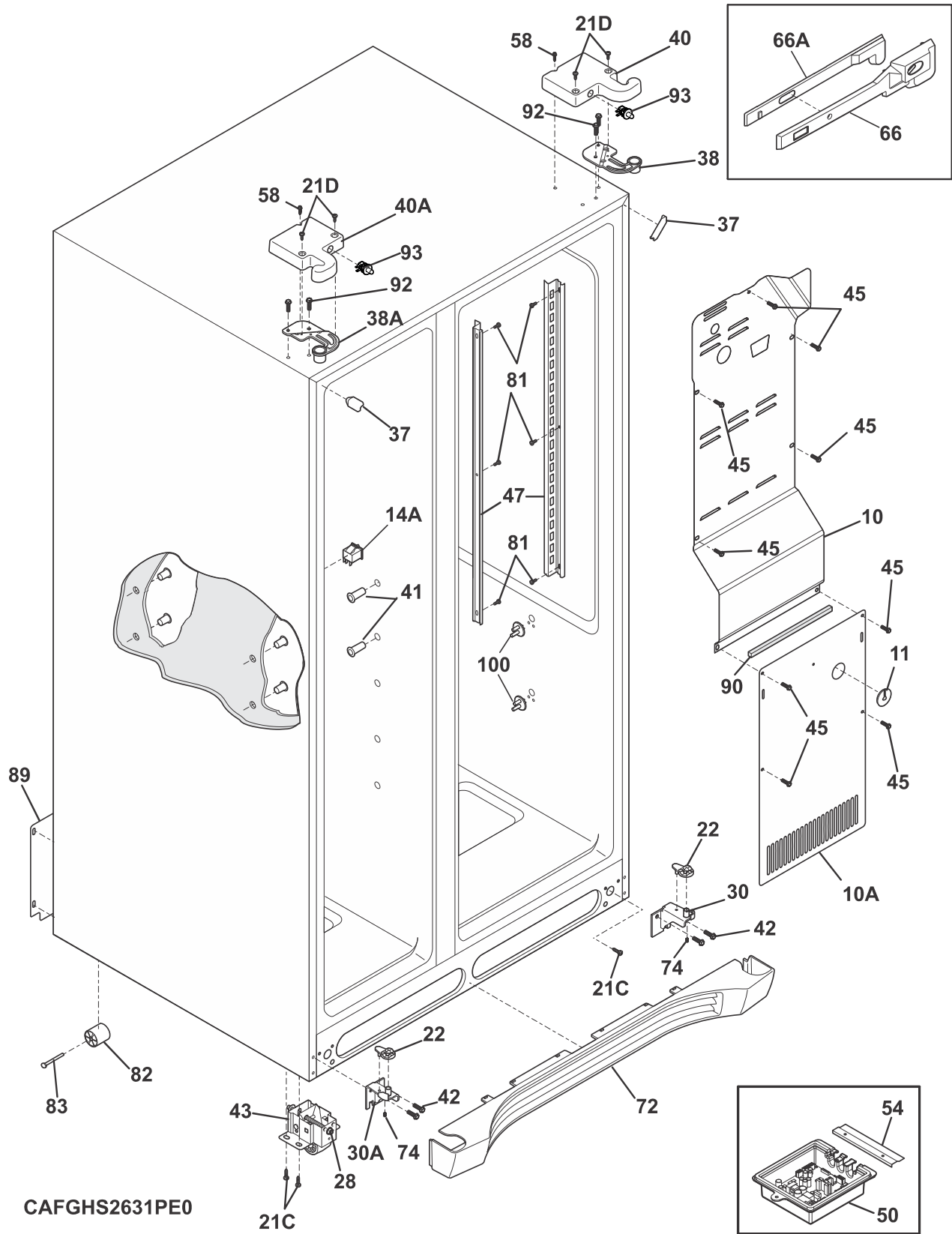
FFFGHS2655PF0

REFRIGERATOR DOOR

Model Index: A FGHS2631P (FGHS2631PE4A)
 B FGHS2631P (FGHS2631PF4A)
 C FGHS2631P (FGHS2631PP4A)

POS. NO	PART NO.		DESCRIPTION
2 #	241786005	A - -	Gasket-refr door, black, magnetic
2 #	241786009	- B -	Gasket-refr door, grey, magnetic
2 #	241786001	- - C	Gasket-refr door, white, magnetic
4	240323002	A B C	Bin-door, pseudo, clear, bottom
7	240326203	A B C	Door-dairy
12	242015201	A B C	Label-nameplate
13	241990201	A B C	Door Stop, black, ref
15	242178116	A - -	Door-refr, black, complete
15	242178113	- B -	Door-refr, stainless, complete
15	242178115	- - C	Door-refr, white, complete
18	241930103	A - -	Handle-door, black
18	241930101	- B -	Handle-door, stainless
18	241930102	- - C	Handle-door, white, (2)
18*	241601002	A B C	Wrench, allen
21A	240442706	A B C	Screw-#10-32 X 3/4, zinc
22	241990301	A B C	Bearing-hinge, gray
22B	241760404	A B -	Bearing, hinge, top
22B	241760403	- - C	Bearing, hinge, top
49	241808205	A B C	Bin-door, gallon
79	218755408	A B C	Screw-set, 10-32 x 0.375
80	218755504	A B C	Screw, shoulder, #10-AB, handle mounting

CABINET

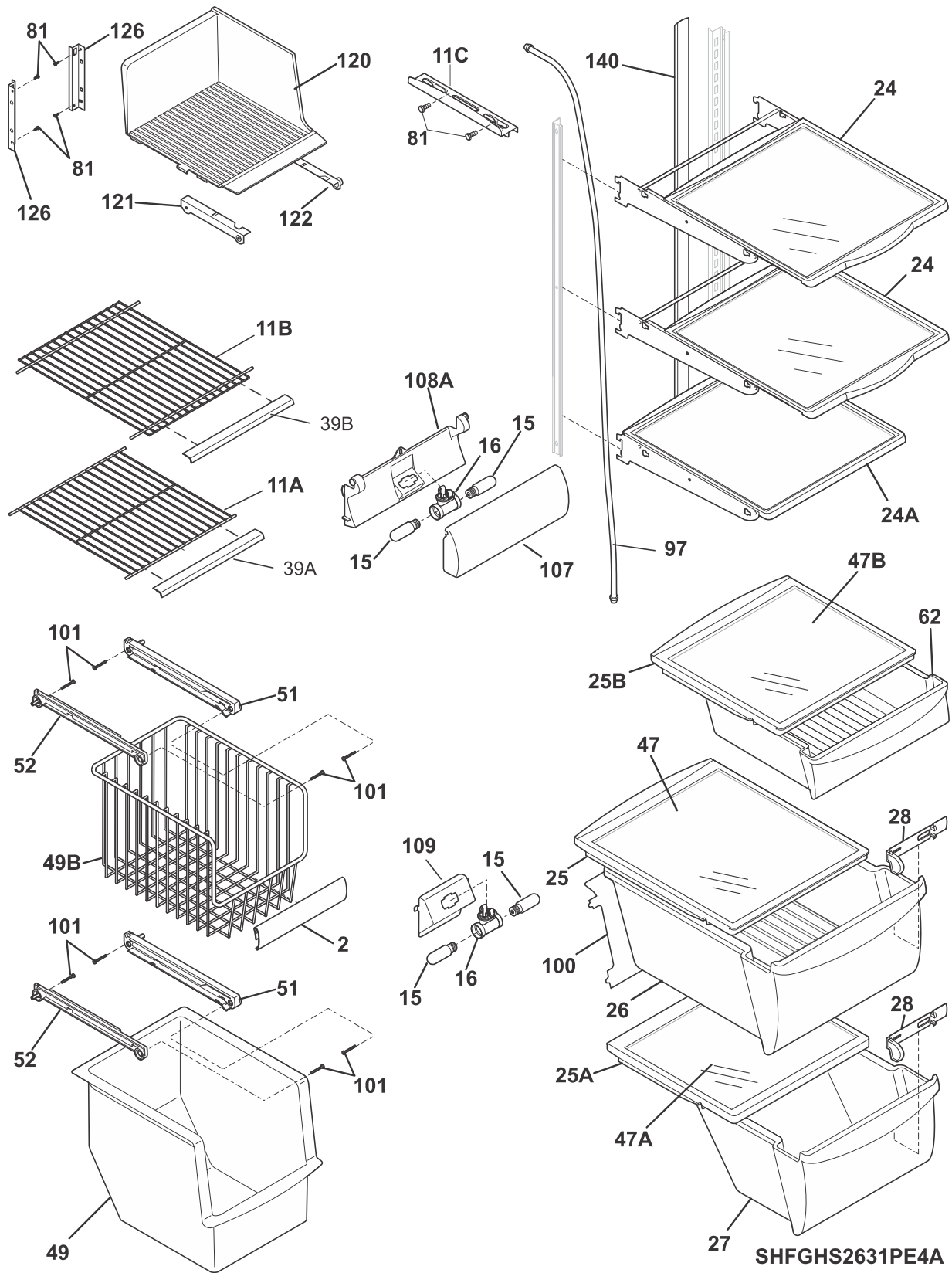


CABINET

Model Index: A FGHS2631P (FGHS2631PE4A)
 B FGHS2631P (FGHS2631PF4A)
 C FGHS2631P (FGHS2631PP4A)

POS. NO	PART NO.		DESCRIPTION
10	240435914	A B C	Cover-air duct
10A	241719711	A B C	Cover-evap coil, lower
11	5303208309	A B C	Plug-hole, factory test
14A#	241547901	A B C	Switch-light/lamp, frzr door
21C	218252201	A B C	Screw, #8 truss hd, 10-32CA x 0.500
21D	218781101	A B C	Screw, pan head, 8-18 x 0.625
22	241917801	A B C	Plate-door closer
28	240335502	A B C	Bolt-roller adj, hex washer head, 1/4-20 x 4.020, (2), special
30	241918001	A B C	Bracket-lower hinge, w/hinge pin, RH, and screw
30A	241918004	A B C	Bracket-lower hinge, w/hinge pin, LH, and screw
37	242161202	A - -	Trim-cabinet corner, black, (2)
37	242161206	- B -	Trim-cabinet corner, gray, (2)
37	242161201	- - C	Trim-cabinet corner, white, (2)
38	241761301	A B C	Bracket-upper hinge, RH
38A	241761302	A B C	Bracket-upper hinge, LH
40	241946705	A - -	Cover-upper hinge, black, RH
40	241946709	- B -	Cover-upper hinge, gray, RH
40	241946701	- - C	Cover-upper hinge, white
40*	241835801	A B C	Harness-wiring, refrigerator
40A	241946706	A - -	Cover-upper hinge, black, LH
40A	241946710	- B -	Cover-upper hinge, gray, LH
40A	241946702	- - C	Cover-upper hinge, white, LH
40A*	241891901	A B C	Harness-wiring, freezer
41	241550801	A B C	Grommet-shelf mtg, 1.40" long
41*	241550701	A B C	Grommet-shelf mtg, .96" long
42	240578902	A B C	Screw, hex head, 1/4-20 x 5/8
43	240335006	A B C	Roller Assy, front, (2)
45	241500303	A B C	Screw, hex washer head, 8-18AB x 1/2
47	241513001	A B C	Channel-shelf mtg, side, (2)
50 #	5304497976	A B C	Board-main power, board & housing
50*	241852502	A B C	Clip, retainer, harness
54	241532401	A B C	Channel
58	241548003	A B C	Screw, 10-32 x 3/8
66	241756801	A B C	Damper-meat keeper
66*	241512807	A B C	Seal
66*	241781601	A B C	Seal-return air
66A	241756901	A B C	Housing-damper
72	241969403	A - -	Grille/Kickplate, black
72	241969405	- B -	Grille/Kickplate
72	241969401	- - C	Grille/Kickplate, white
74	218755402	A B C	Screw-set, 10-32 x .500 in
82	240335202	A B C	Roller, compressor base, rear
83	5304455655	A B C	Rivet, flat head, 1/4 OD x 1-3/4, roller pin
89	241733902	A B C	Cover-access, w/label
90	218249808	A B C	Seal-coil cover
92	241710601	A B C	Screw, hex washer hd, 1/4 x 7/8, hinge mtg
93 #	241911704	A - -	Switch, plunger style
93 #	241911705	- B -	Switch-light, grey, (2)
93 #	241911703	- - C	Switch, plunger style
100	241993101	A B C	Support-crisper cvr
100*	241993001	A B C	Support-crisper cvr
*	240396802	A B C	Clamp, tube/wiring, nylon, black/natural
*	240494001	A B C	Plug-button, white, cab liner holes
*	241868101	A B C	Air Guide
*	241890601	A B C	Louver, air supply, crisper

SHELVES

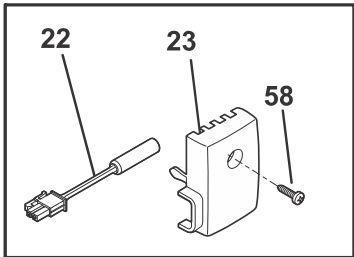
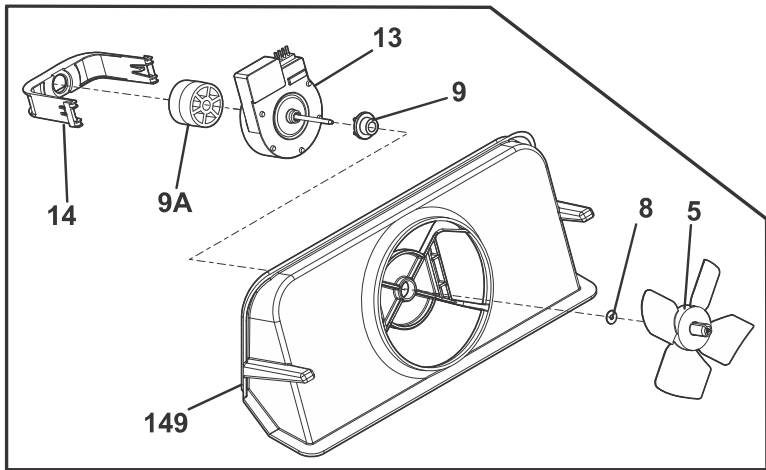
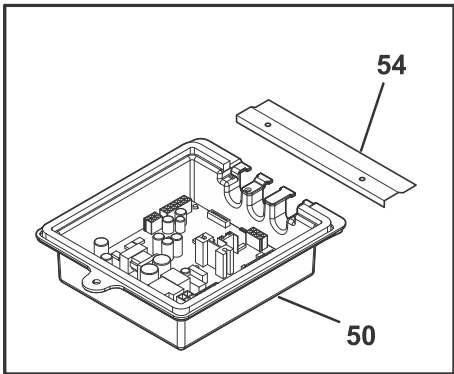
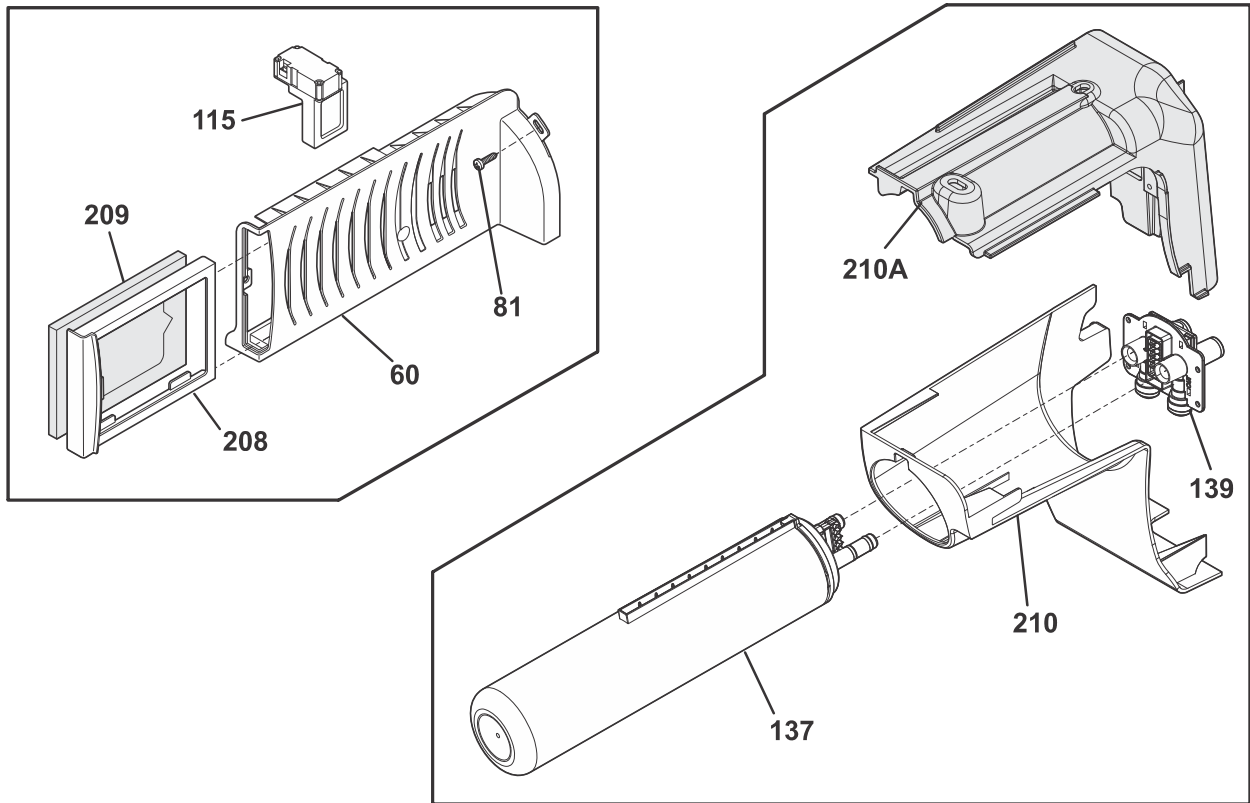


SHELVES

Model Index: A FGHS2631P (FGHS2631PE4A)
 B FGHS2631P (FGHS2631PF4A)
 C FGHS2631P (FGHS2631PP4A)

POS. NO	PART NO.		DESCRIPTION
2	241510604	A B C	Trim-basket
11A	241657602	A B C	Shelf, flip up, wire
11B	241657504	A B C	Shelf, fixed, upper, freezer
11C	240324101	A B C	Shelf-pizza
15 #	241552802	A B C	Light Bulb
16 #	241622802	A B C	Socket-light, frz light
16*#	241987601	A B C	Harness-wiring
24	240350136	A B C	Shelf-"Spill-Safe", cantilever, sliding
24A	240355270	A B C	Shelf-"Spill-Safe", fixed
25	240599301	A B C	Cover-crisper pan, upper
25A	240350903	A B C	Cover-crisper pan, lower
25B	241969501	A B C	Cover-meat pan
26	240351061	A B C	Pan-crisper, upper
27	240351240	A B C	Pan-crisper, lower
28	240362201	A B C	Control-humidity
39A	240430706	A B C	Trim-shelf, 11.21", front
39B	240430702	A B C	Trim-shelf, 12.39", front
47	240350649	A B C	Insert-pan cover, glass
47A	240350603	A B C	Insert-pan cover, glass
47B	240443384	A B C	Insert-pan cover, glass
49	240564401	A B C	Basket-sliding
49B	240530504	A B C	Basket-sliding, upper, full
51	240343002	A B C	Hanger-basket, RH
52	240343102	A B C	Hanger-basket, LH
62	241969601	A B C	Pan-meat
62*	241868101	A B C	Air Guide
81	5304455650	A B C	Screw, hex washer head, 8-15A x 0.625, Low Profile
97	241532007	A B C	Water Tank
97	242220208	A B C	Tube-water inlet, .315 - 97.50", natural
97*	242103001	A B C	Connector-water, straight, 5/16 to 5/16
97*	242200101	A B C	Clip, tubing, 90 deg elbow
100	240326304	A B C	Cover-water tank
101	218493101	A B C	Screw, hex washer head, 8-18AB x 1-3/4
107	241753601	A B C	Shield-light, upper
108A	241753701	A B C	Housing-light, upper, fresh food
109	241513202	A B C	Base-crisper light socket
120	241691901	A B C	Shelf-ice cream
121	241561001	A B C	Rail-ice cream shelf, LH
122	241692001	A B C	Rail-ice cream shelf, LH
126	241674401	A B C	Channel, auger mtg, LH
126	241674402	A B C	Channel, auger mtg, RH
140	241812501	A B C	Channel, wtr tube cover
*	240349801	A B C	Clip-slide, pan
*	240362101	A B C	Clip-slide, cover
*	241595202	A B C	Clip-slide, crisper
*	807332435	A B C	Label, energy guide

CONTROLS



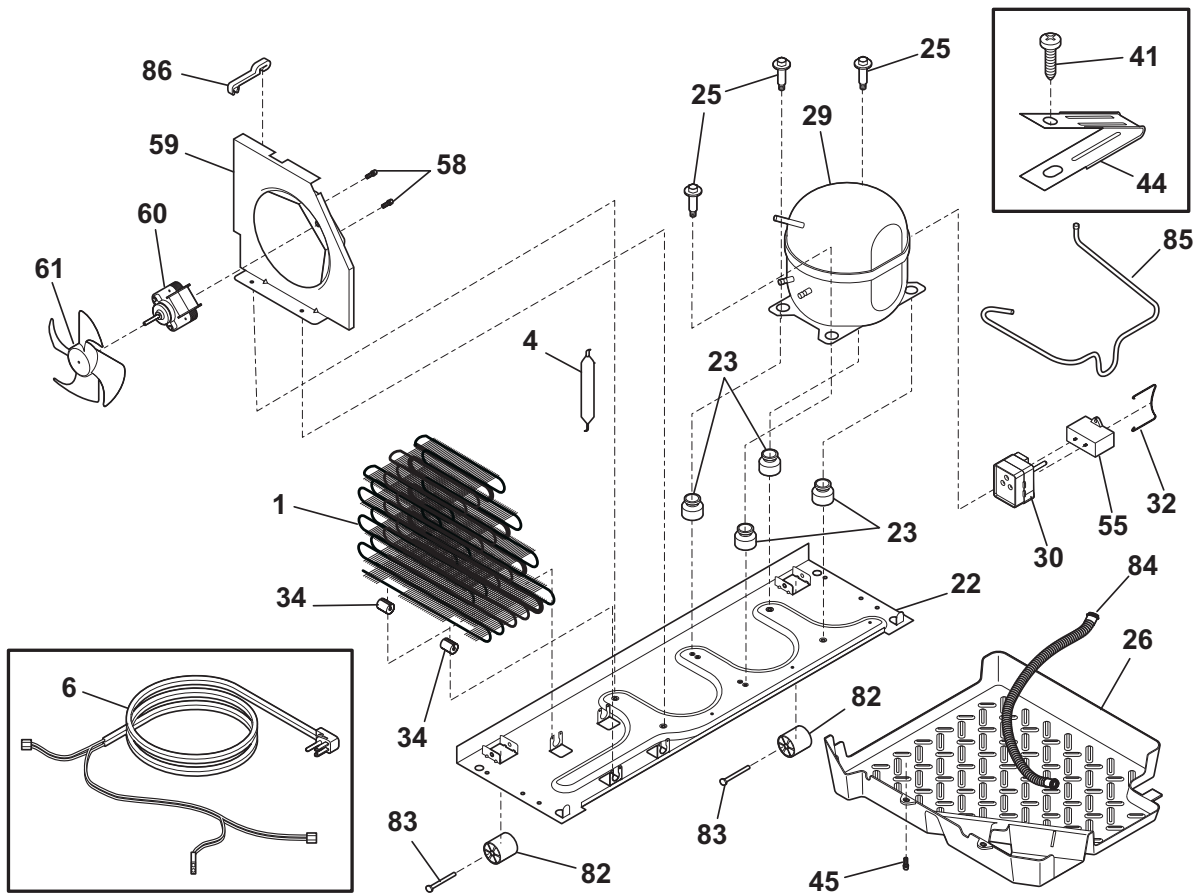
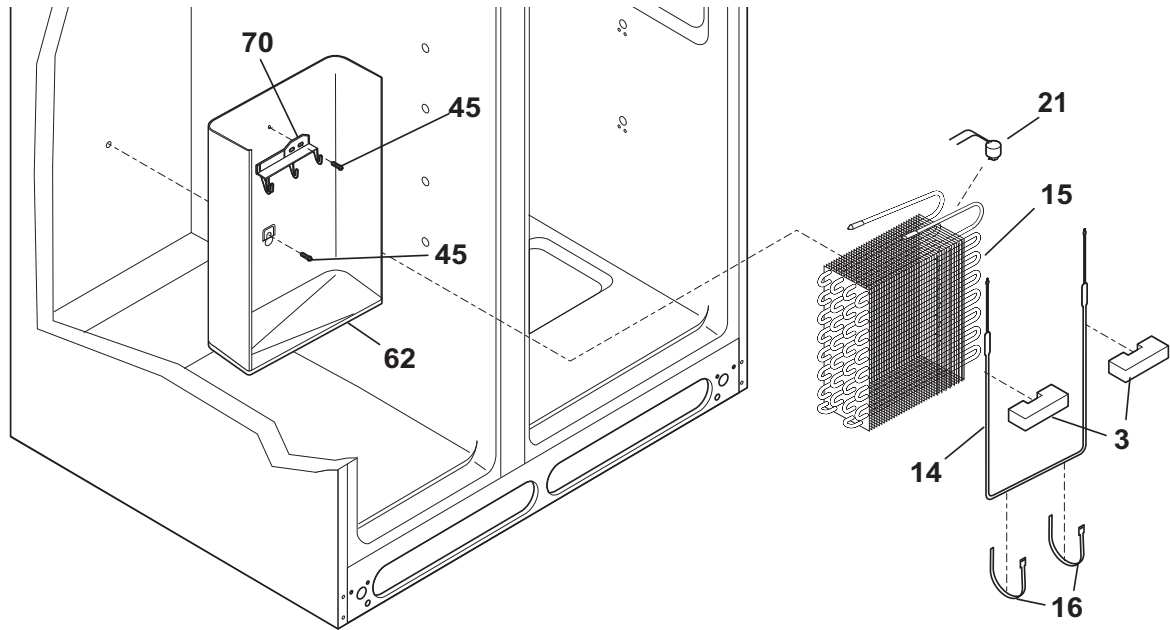
CTFGHS2631PE0

CONTROLS

Model Index: A FGHS2631P (FGHS2631PE4A)
 B FGHS2631P (FGHS2631PF4A)
 C FGHS2631P (FGHS2631PP4A)

POS. NO	PART NO.		DESCRIPTION
5	5308000010	A B C	Fan Blade, red, evaporator fan
8	215474201	A B C	Washer, "slinger", nylon, evap fan shaft
9	241563601	A B C	Bushing-motor mtg
9A	241845301	A B C	Bushing-motor mtg
13 #	241509402	A B C	Motor, evaporator fan
14	242135301	A B C	Clip, evap fan motor, evap fan motor
22 #	240597203	A B C	Sensor, temperature, 10K, NTC
23	241845401	A B C	Housing-sensor
50 #	5304497976	A B C	Board-main power, board & housing
50*	241852502	A B C	Clip, retainer, harness
54	241532401	A B C	Channel
58	5304455650	A B C	Screw, hex washer head, 8-15A x 0.625, Low Profile
60	242010601	A B C	Housing-diffuser & air filter
60*	241945101	A B C	Insulation-air duct
81	5304455658	A B C	Screw, hx wshr hd sems, 8-15A x 0.625
115	241853801	A B C	Damper Assy, w/seal
137	241791601	A B C	Filter-water, carbon
139	242009601	A B C	Base-water filter
149	241563501	A B C	Shroud-fan orifice
149*	241528306	A B C	Seal, shroud
208	241754301	A B C	Sleeve, air filter, front
209	242047801	A B C	Filter, air
210	241983812	A B C	Housing-water filtr
210*	240363402	A B C	Screw, plask, #8-18 x .500
210A	241998302	A B C	Mount-water filter
*	241500303	A B C	Screw, hex washer head, 8-18AB x 1/2

SYSTEM



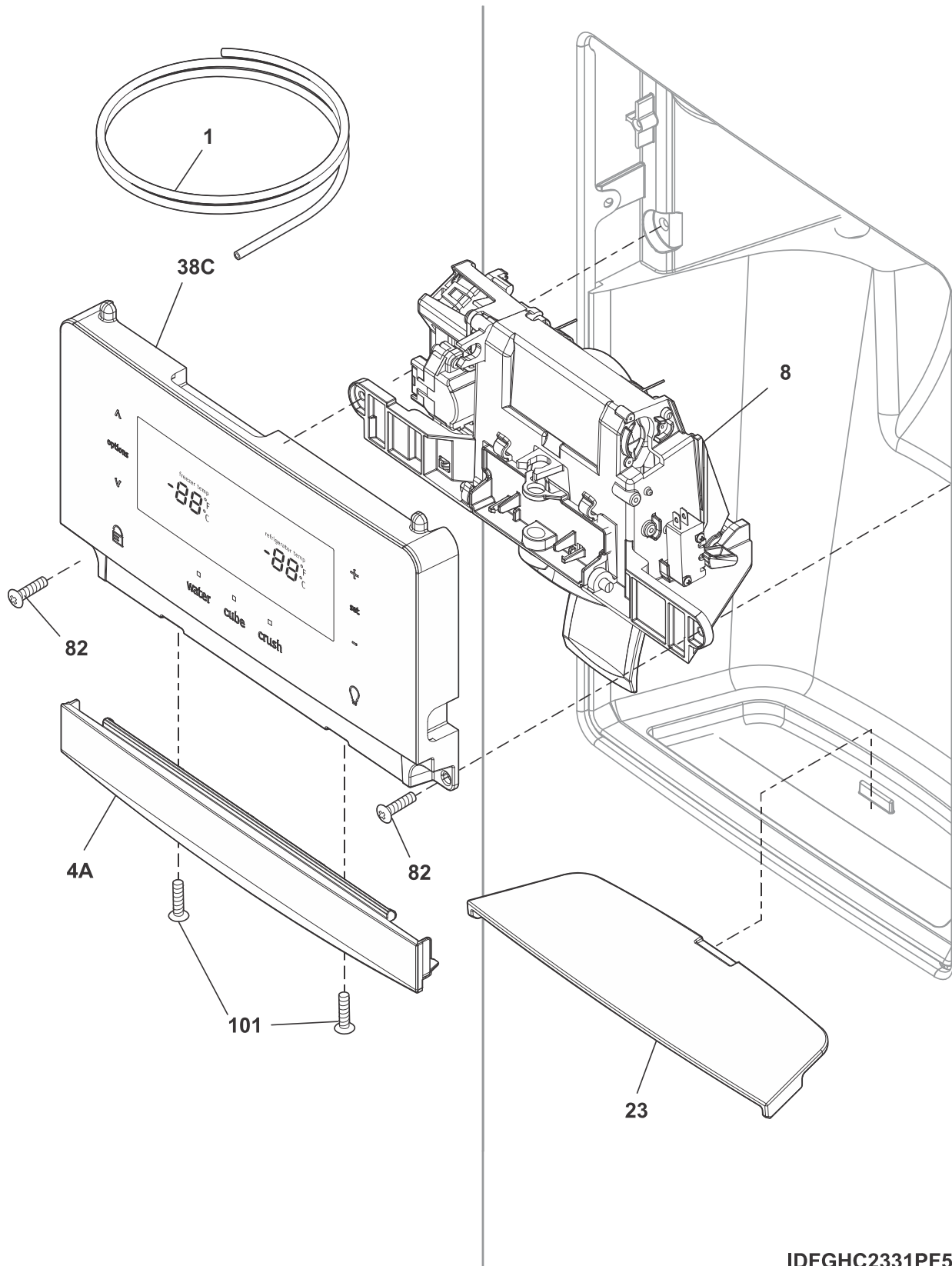
SYFFHS2311LB3

SYSTEM

Model Index: A FGHS2631P (FGHS2631PE4A)
 B FGHS2631P (FGHS2631PF4A)
 C FGHS2631P (FGHS2631PP4A)

POS. NO	PART NO.		DESCRIPTION
1 #	242106605	A B C	Condenser
3	218679614	A B C	Block-evap coil, styrofoam, (2)
4 #	242047603	A B C	Dryer-filter
6 #	241516901	A B C	Cord-service
6* #	241519902	A B C	Harness-wiring
6* #	242141102	A B C	Harness-wiring machine compt
14 #	242044113	A B C	Heater-defrost
15 #	5303918284	A B C	Evaporator Kit
16	5308000110	A B C	Strap-evap/heater, aluminum, (2)
21 #	5303918214	A B C	Thermostat-defrost, kit
22	240330012	A B C	Base-compressor
22*	218252201	A B C	Screw, #8 truss hd, 10-32CA x 0.500
23	241659701	A B C	Grommet-compr mtg, compressor, (4)
25	240491503	A B C	Screw-compressor mtg, 1/4-28 x 1.16, (4)
26	241697602	A B C	Pan-defrost
29 #	241650211	A B C	Compressor & Grommets, w/o electricals
30 #	216954215	A B C	Controller, compressor
32	216954300	A B C	Clip, controller
34	240405201	A B C	Grommet, rubber, black, cond tube/wire
41	240555002	A B C	Screw-#8-32 X 3/8
44	215174700	A B C	Clamp-service cord, strain relief, galv steel
45	5304455650	A B C	Screw, hex washer head, 8-15A x 0.625, Low Profile
55 #	297286803	A B C	Capacitor-run
58	240569201	A B C	Screw, 8-18 x 0.500
59	241946106	A B C	Shroud-cond fan
59*	240346701	A B C	Tape-foam seal, shroud
59*	240359403	A B C	Screw-fan shroud, (2)
60 #	242018301	A B C	Motor-condenser fan
61	241639501	A B C	Blade-condenser fan
62	240429405	A B C	Trough-drain
70	218990801	A B C	Bracket-evap/cvr mtg
82	240335202	A B C	Roller, compressor base, rear
83	5304455655	A B C	Rivet, flat head, 1/4 OD x 1-3/4, roller pin
84	241830903	A B C	Tube-drain, lower
84*	242036801	A B C	Clip-tube, drain
85	241856903	A B C	Tube-connector, suction
86	240409302	A B C	Spacer-cond tube, black
*	5303918222	A B C	Hot Tube Repair Kit, service
* #	5303918327	A B C	Heat Exchanger Kit, suction line
*	218709101	A B C	Screw, hex head, 10-32 x 0.500

ICE & WATER DISPENSER



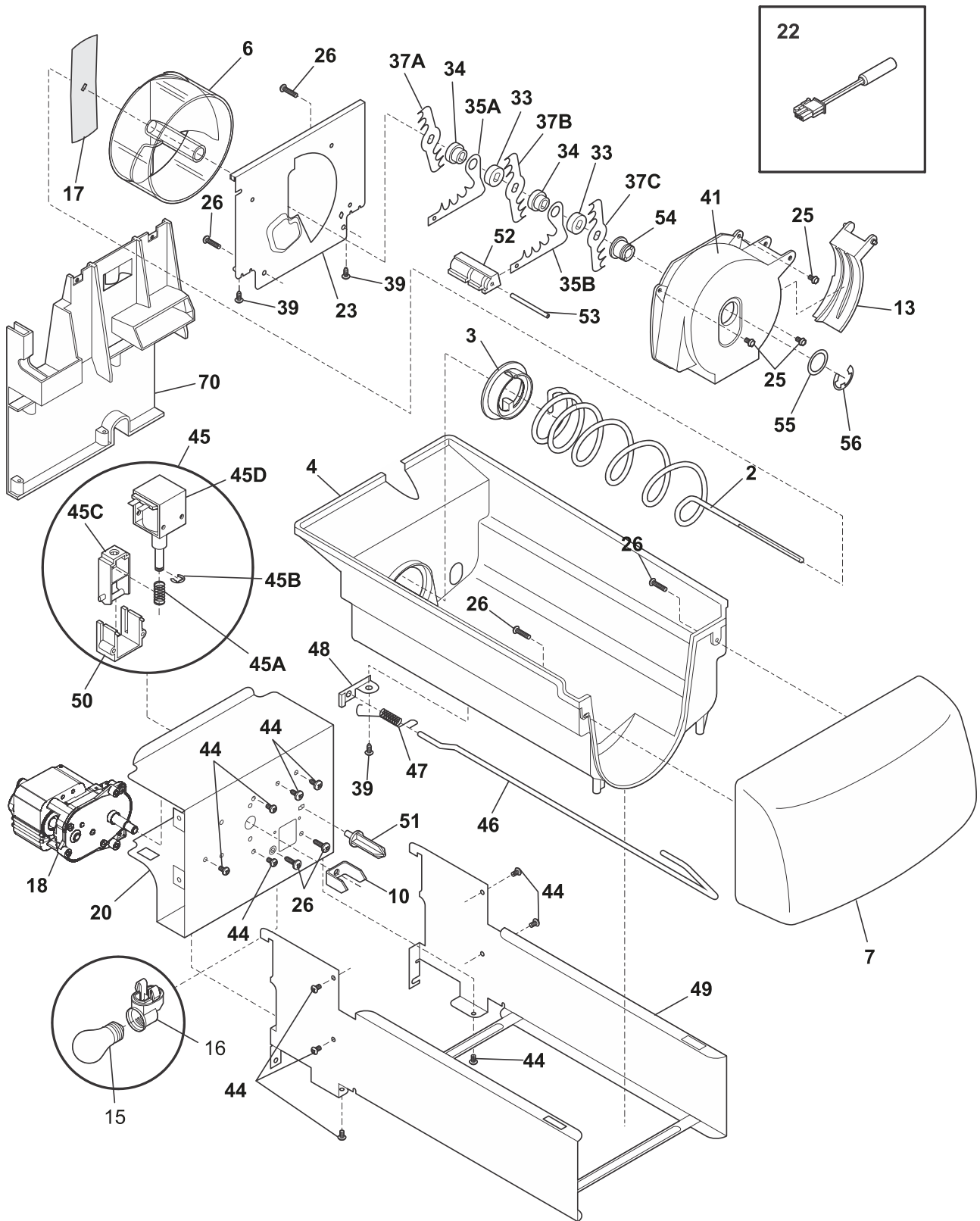
IDFGHC2331PF5

ICE & WATER DISPENSER

Model Index: A FGHS2631P (FGHS2631PE4A)
 B FGHS2631P (FGHS2631PF4A)
 C FGHS2631P (FGHS2631PP4A)

POS. NO	PART NO.		DESCRIPTION
1	218976438	A B C	Tube, water, 62", natural, door
1*	218976439	A B C	Tube-water inlet, 5/16 - 3/2", yellow, valve to door
1*	218976915	A B C	Tube-water inlet, inlet valve, to I/M inlet
1*	240561703	A B C	Seal-water inlet, inlet valve, to ice maker
1*	241796407	A B C	Tube-water fill, extension
1*	242220206	A B C	Tube-water inlet, .315 - 97.50", brown/tan
4A	242176402	A - -	Trim, Facade, black
4A	242176404	- B -	Trim, Facade, grey
4A	242176401	- - C	Trim, Facade, white
8 #	242270101	A B C	Module, dispenser, clear, w/paddle
23	242176502	A - -	Sump, dispenser, black
23	242176503	- B -	Sump, dispenser, grey
23	242176501	- - C	Sump, dispenser, white
38C#	242058232	A B C	User Interface, assembly, grey, complete
38C*	241953907	A B C	Screw, #8-18
82	240363403	A B C	Screw, 8-18 x 0.500, 2
101	241953902	A B C	Screw, #8 - 18 X .380, 3
* #	807487901	A B C	Harness, wiring, door
* #	5303918371	A B C	Dispenser Heater Kit, 115

ICE CONTAINER



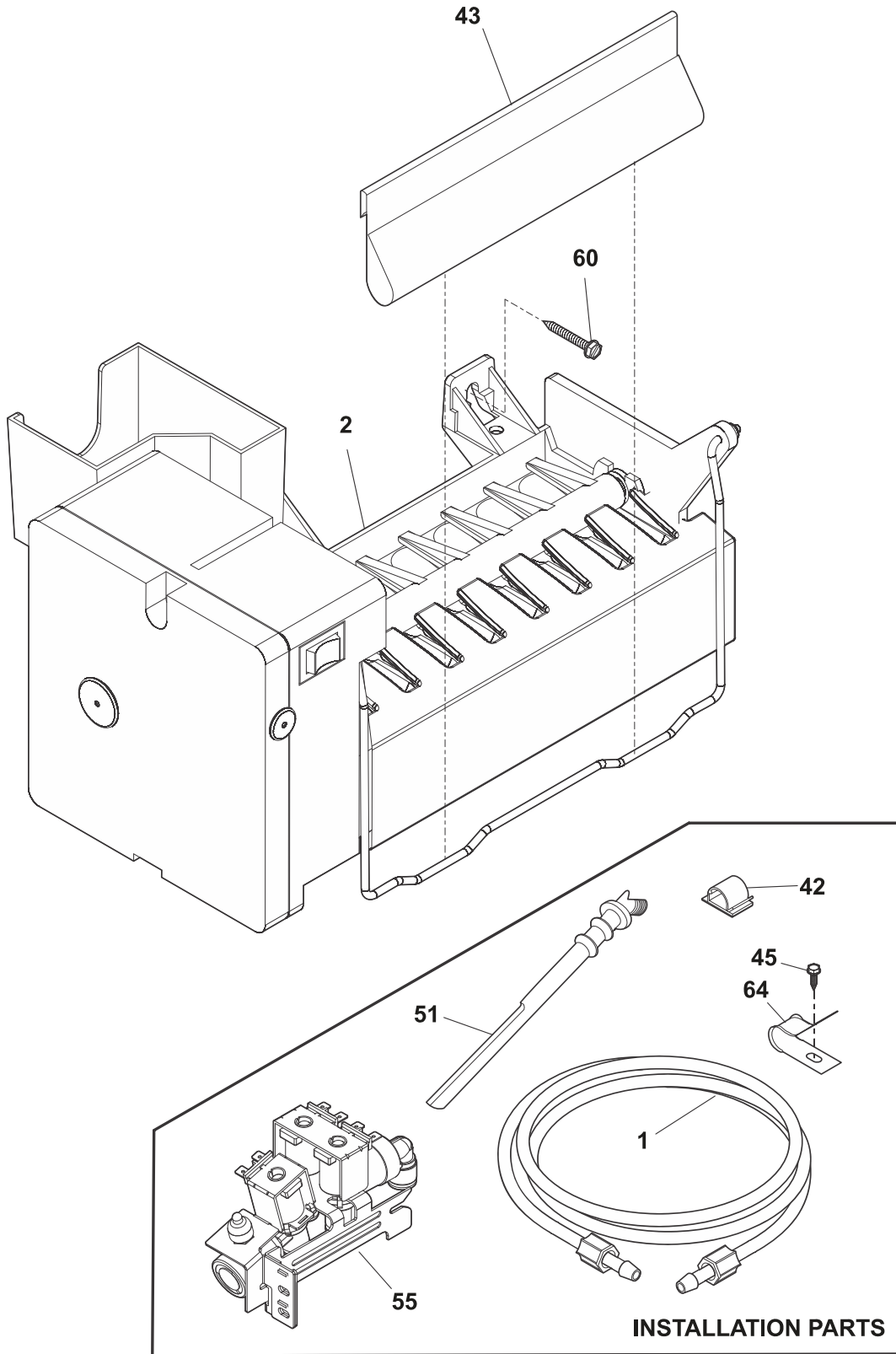
ICFGHS2631PE4A

ICE CONTAINER

Model Index: A FGHS2631P (FGHS2631PE4A)
 B FGHS2631P (FGHS2631PF4A)
 C FGHS2631P (FGHS2631PP4A)

POS. NO	PART NO.		DESCRIPTION
2	241716101	A B C	Auger-ice
3	241685201	A B C	Cam-drive
4	241561302	A B C	Container-ice, bucket only
6	241685103	A B C	Drum-ice disp
7	241561402	A B C	Front-ice container
10	241726501	A B C	Bar-drive
13	241685301	A B C	Gate
15 #	241555401	A B C	Light Bulb
16 #	241559801	A B C	Socket-light
17	241684501	A B C	Drive Blade
18 #	242221501	A B C	Motor-auger
18*#	241522901	A B C	Harness-wiring, icmkr/container
20	241675502	A B C	Cover-motor
22	240597203	A B C	Sensor, temperature, 10K, NTC
22*	241519401	A B C	Clip, sensor
23	241684001	A B C	Plate-front
25	241690701	A B C	Screw, hex washer head, 8-32T x 0.375
26	215503205	A B C	Screw, cr pan hd, 10-16 x 0.500
33	241684801	A B C	Spacer
34	241689801	A B C	Spacer
35A	241684301	A B C	Fixed Blade, round
35B	241684201	A B C	Fixed Blade, square
37A	241684101	A B C	Blade, crusher #1
37B	241684102	A B C	Blade, crusher #2
37C	241684103	A B C	Blade, crusher #3
39	241690501	A B C	Screw
41	241685601	A B C	Housing-crusher
44	241842101	A B C	Screw, 8-32 x 1/4
45 #	241675704	A B C	Solenoid Assy, 115V
45A	241675902	A B C	Spring-solenoid
45B	241676001	A B C	E-Ring-solenoid
45C	241676101	A B C	Actuator-solenoid
45D#	241675803	A B C	Solenoid, 115V
46	241716002	A B C	Control Rod
47	241731801	A B C	Spring-control rod
48	241684602	A B C	Bracket-control rod
49	241734501	A B C	Rail Assy
50	241675601	A B C	Guide-solenoid
51	241676301	A B C	Rotation Stop
52	241684901	A B C	Spacer-fixed blades
53	241690402	A B C	Pin-spiral, fixed blades
54	241685001	A B C	Nut-auger
55	241690306	A B C	Washer
56	241690201	A B C	E-ring
70	241561502	A B C	Plate-mounting
70*	241551602	A B C	Screw, hex head, 8-18B x 0.875
70*	241716801	A B C	Clip
* #	241860810	A B C	Ice Container Assy, w/moving parts
*	241587402	A B C	Deflector-ice
*	240555002	A B C	Screw-#8-32 X 3/8

ICE MAKER



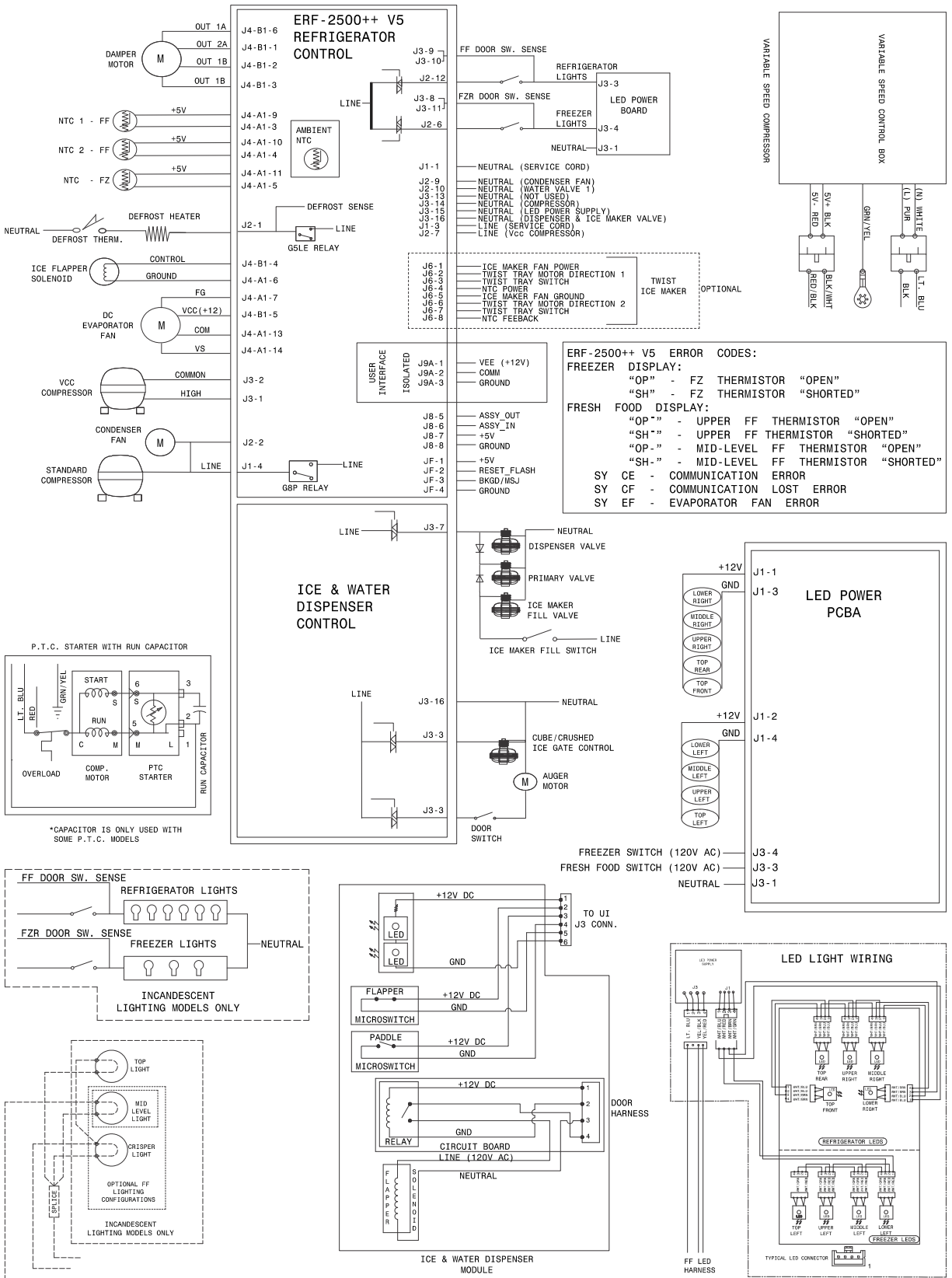
IMFFSC2323LSB

ICE MAKER

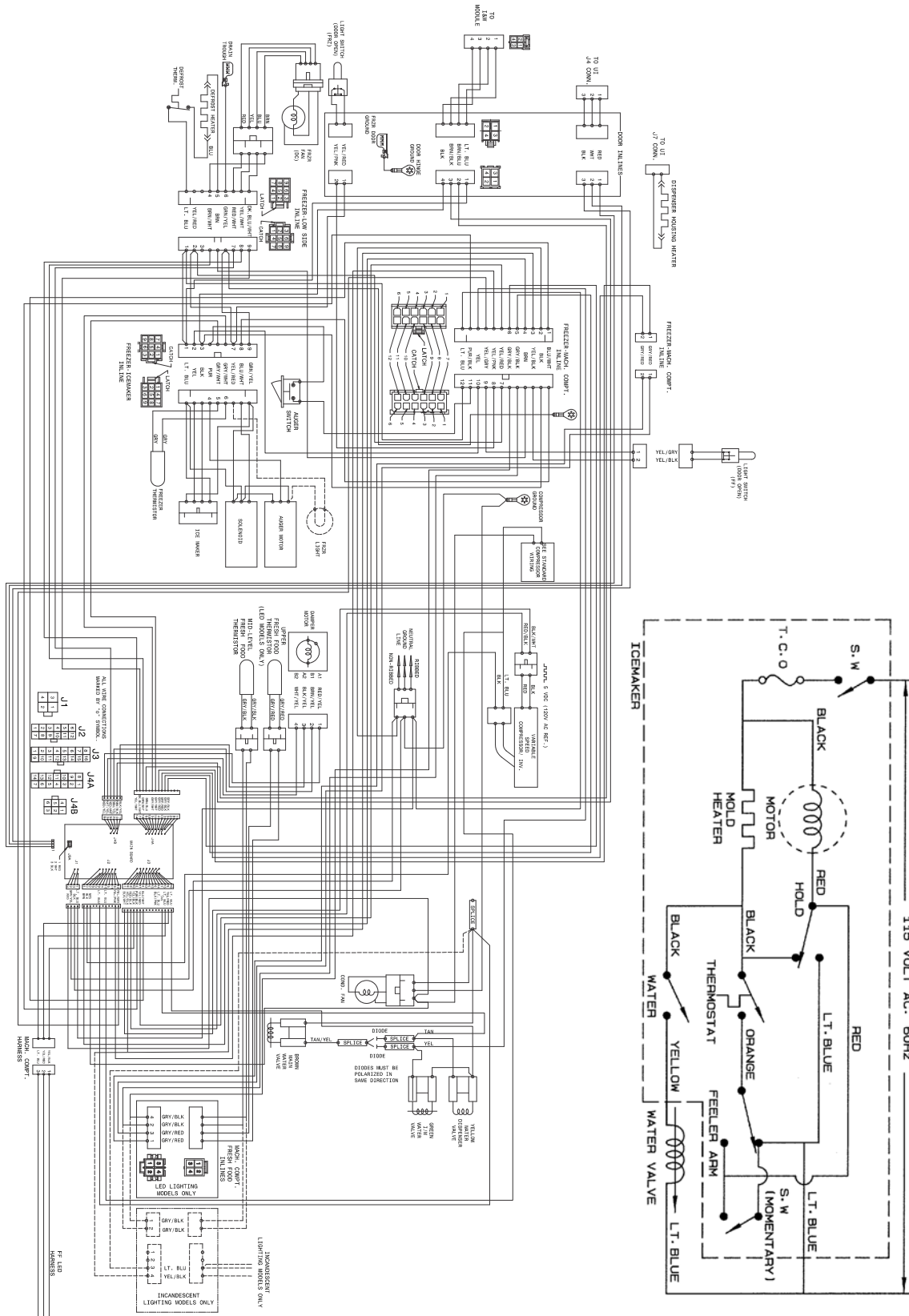
Model Index: A FGHS2631P (FGHS2631PE4A)
 B FGHS2631P (FGHS2631PF4A)
 C FGHS2631P (FGHS2631PP4A)

POS. NO	PART NO.		DESCRIPTION
1	218976438	A B C	Tube, water, 62", natural, door
1*	218976439	A B C	Tube-water inlet, 5/16 - 32", yellow, valve to door
1*	218976915	A B C	Tube-water inlet, inlet valve, to I/M inlet
1*	240561703	A B C	Seal-water inlet, inlet valve, to ice maker
1*	242220206	A B C	Tube-water inlet, .315 - 97.50", brown/tan
2 #	241709801	A B C	Ice Maker, radius cube, 115 V, no instl parts
43	241720601	A B C	Extension
45	5304455650	A B C	Screw, hex washer head, 8-15A x 0.625, Low Profile
51	241796407	A B C	Tube-water fill, extension
55 #	242252702	A B C	Valve, solenoid, triple
55*	218709101	A B C	Screw, hex head, 10-32 x 0.500
55*	240363602	A B C	Screw-shoulder
60	218362501	A B C	Screw, hex washer head, 8-18AB x 1.250, spacer, (2)
64	5303001549	A B C	Clamp, 0.31 ID, steel, copper wtr line
* #	241522901	A B C	Harness-wiring, icmkr/container
*	241583301	A B C	Deflector-air, ice maker
*	241587402	A B C	Deflector-ice
*	242103001	A B C	Connector-water, straight, 5/16 to 5/16

WIRING SCHEMATIC



WIRING DIAGRAM



Functional Parts
 * Non-Illustrated Parts