

Frigidaire

Factory Parts Catalog

Product No.	FSC23R5DBM	FSC23R5DWM	FSC23R5DSBL
Series	counter depth	counter depth	counter depth
Color	black	white	stainless
Volts	115	115	115
Wiring Diagram	241516401	241516401	241516401
Owner's Guide	241856001	241856001	241856001
Market	North America	North America	North America
Energy Guide	240598644	240598644	241585940
Service Data Sheet	241532603	241532603	241532603

**SIDE-BY-SIDE
REFRIGERATOR**

Model No.
FSC23R5D

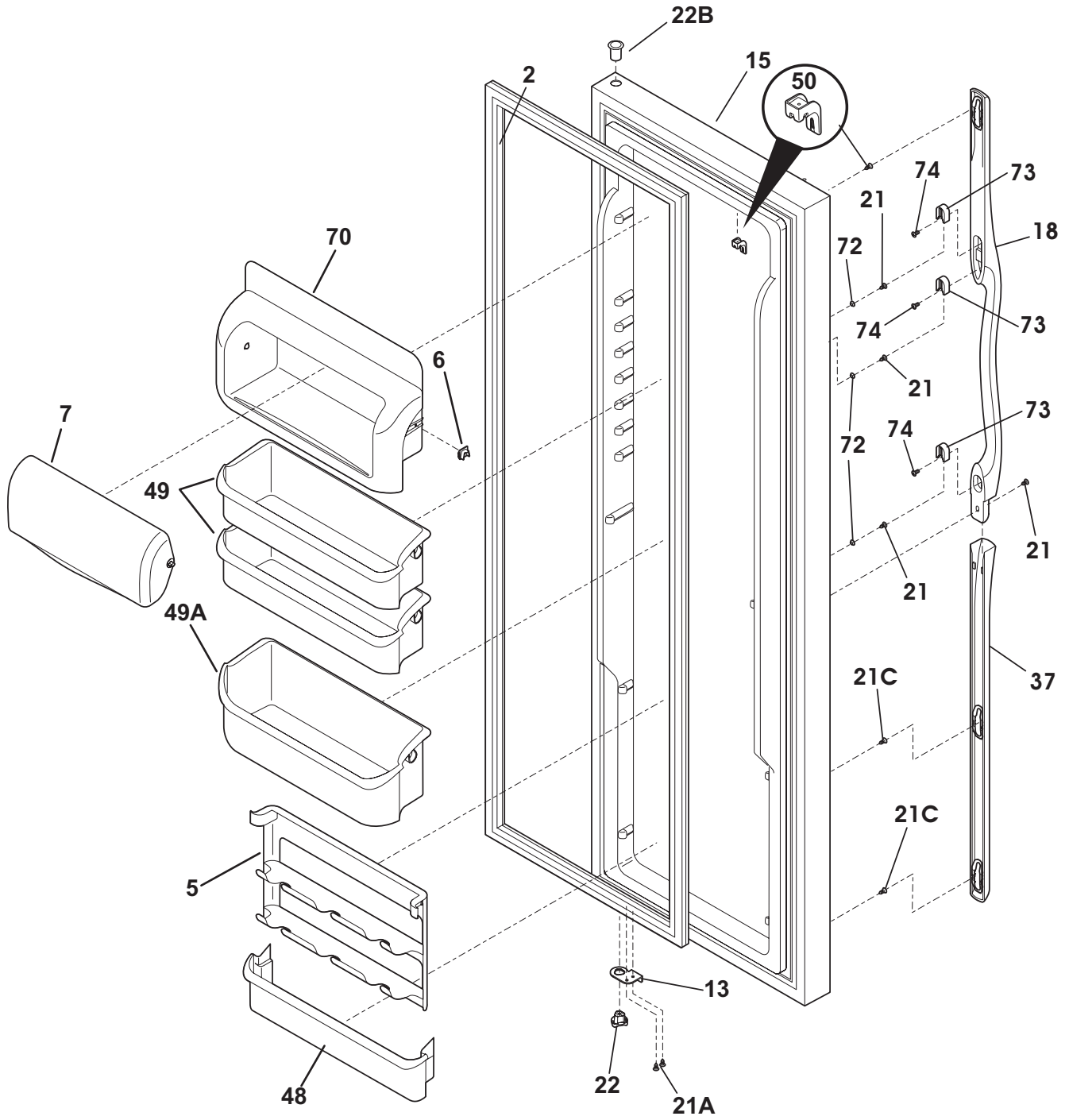
Publication No.
5995550067
09/08/21
(EN/SERVICE/DCS)
137

FREEZER DOOR

Model Index: A FSC23R5D (FSC23R5DBM)
 B FSC23R5D (FSC23R5DWM)
 C FSC23R5D (FSC23R5DSBL)

POS. NO	PART NO.		DESCRIPTION
1 #	241510204	A - C	Gasket-frzr door, black, magnetic
1 #	241510202	- B -	Gasket-frzr door, white, magnetic
4B	241511601	A B C	Bin-door
11	241668173	A - -	Door-frzr, black, complete assy
11	241668124	- B -	Door-frzr, white, complete assy
11	241526736	- - C	Door-frzr, stainless, complete assy
13A	240581906	A - C	Door Stop, black, frzr
13A	240581902	- B -	Door Stop, white, frzr
18	241934305	A - C	Handle-door, black
18	241934304	- B -	Handle-door, white
21	218781101	A B C	Screw, pan head, 8-18 x 0.625
21A	240598402	A B C	Screw, 10-32 x 1/2
21C	240442706	A B C	Screw-#10-32 X 3/4, zinc
22A	242000502	A - C	Bearing-hinge, black, lower
22A	242000501	- B -	Bearing-hinge, natural, lower
22C	240328404	A - C	Bearing-hinge, black, upper
22C	240328402	- B -	Bearing-hinge, natural, upper
37	241927002	A - C	Trim-door handle, black, bottom
37	241927001	- B -	Trim-door handle, white, bottom
68	241525101	A B C	Chute-ice
72	240421701	A B C	Button-handle mtg, dovetail
73	218396700	A B C	Block-handle mtg, dovetail
74	215503204	A B C	Screw, cr pan hd, 10-16
*	240552101	A B C	Harness-wiring, door
*	241806601	A B C	Connector-water, straight
*	5303918256	A B C	Dispenser heater kit

REFRIGERATOR DOOR



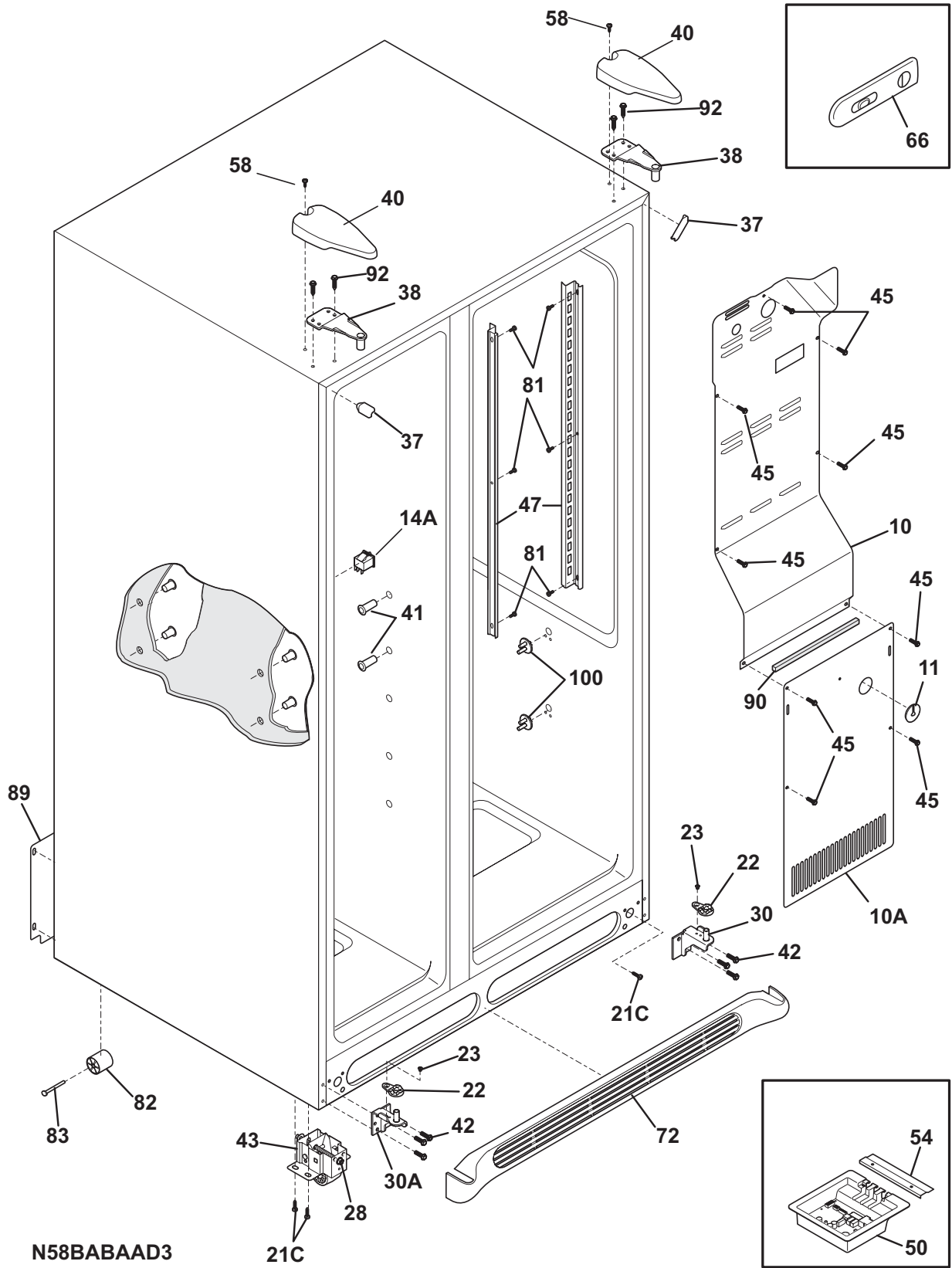
N58RCFCHA1

REFRIGERATOR DOOR

Model Index: A FSC23R5D (FSC23R5DBM)
 B FSC23R5D (FSC23R5DWM)
 C FSC23R5D (FSC23R5DSBL)

POS. NO	PART NO.		DESCRIPTION
2 #	241510203	A - C	Gasket-refr door, black, magnetic
2 #	241510201	- B -	Gasket-refr door, white, magnetic
5	241516101	A B C	Rack-can
6	241515901	A B C	Lug-dairy compartment
7	241515601	A B C	Door-dairy
13	240581905	A - C	Door Stop, black, ref
13	240581901	- B -	Door Stop, white, refr
15	241534507	A - -	Door-refr, black, complete assy
15	241534506	- B -	Door-refr, white, complete assy
15	241534525	- - C	Door-refr, stainless, complete assy
18	241934302	A - C	Handle-door, black
18	241934301	- B -	Handle-door, white
21	218781101	A B C	Screw, pan head, 8-18 x 0.625
21A	240598402	A B C	Screw, 10-32 x 1/2
21C	240442706	A B C	Screw-#10-32 X 3/4, zinc
22	242015302	A - C	Bearing-hinge(ref), black, closer
22	242015301	- B -	Bearing-hinge(ref), natural, closer
22B	240328404	A - C	Bearing-hinge, black, upper
22B	240328402	- B -	Bearing-hinge, natural, upper
37	241927002	A - C	Trim-door handle, black, bottom
37	241927001	- B -	Trim-door handle, white, bottom
48	241511706	A B C	Bin-door, ref
49	241505306	A B C	Bin-door, 2-liter
49A	241505506	A B C	Bin-door
50	241508401	A B C	Cover-magnet
70	241515801	A B C	Compartment-dairy, removable
72	240421701	A B C	Button-handle mtg, dovetail
73	218396700	A B C	Block-handle mtg, dovetail
74	215503204	A B C	Screw, cr pan hd, 10-16

CABINET

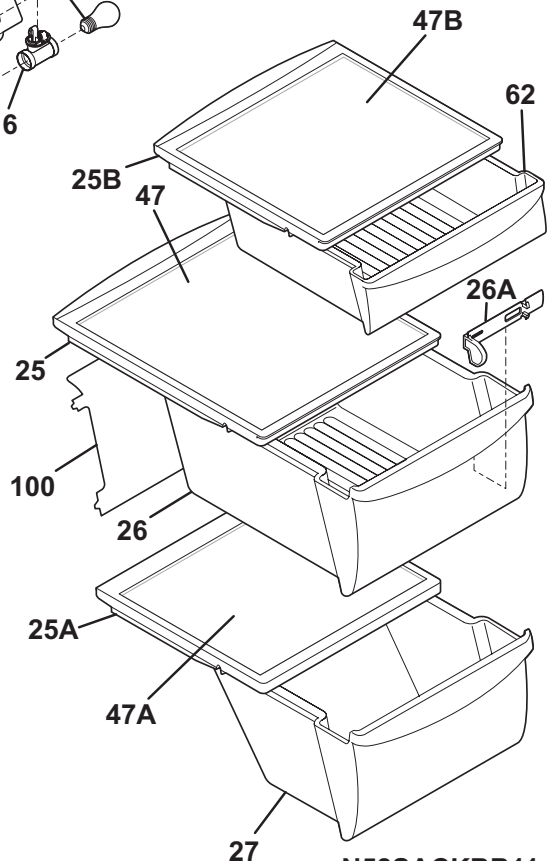
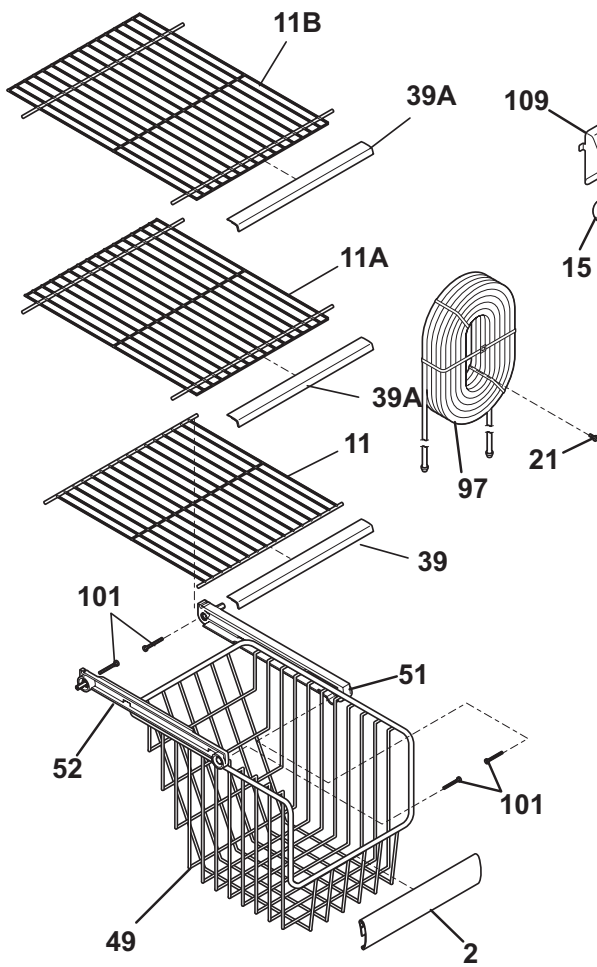
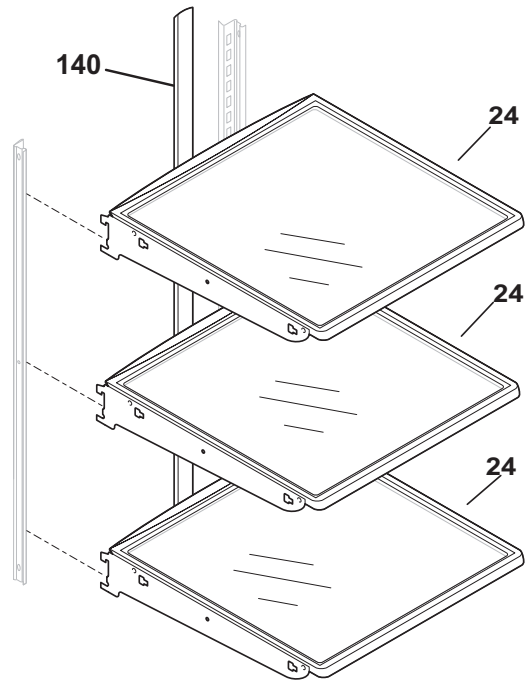
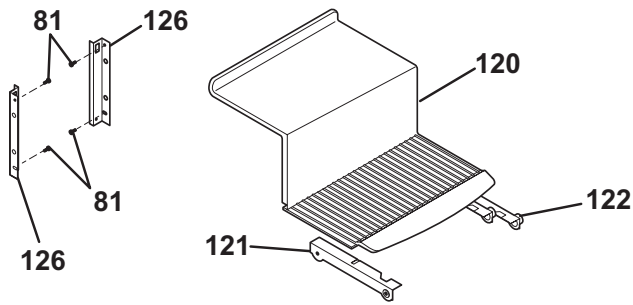


CABINET

Model Index: A FSC23R5D (FSC23R5DBM)
 B FSC23R5D (FSC23R5DWM)
 C FSC23R5D (FSC23R5DSBL)

POS. NO	PART NO.		DESCRIPTION
10	241509804	A B C	Cover-air duct
10A	241719711	A B C	Cover-evap coil, lower
11	5303208309	A B C	Plug-hole, factory test
14A	241547901	A B C	Switch-light/lamp, frzr door
21C	218252201	A B C	Screw, #8 truss hd, 10-32CA x 0.500
22	241856502	A - C	Plate-door closer, black
22	241856501	- B -	Plate-door closer, natural
23	240402702	A B C	Screw-#10-32 x 1/4 flat hd
28	240335502	A B C	Bolt-roller adj, hex washer head, 1/4-20 x 4.020, (2), special
30	242034601	A B C	Bracket-lower hinge
30A	242034602	A B C	Bracket-lower hinge
37	240337610	A - C	Trim-cabinet corner, black, (2)
37	240337608	- B -	Trim-cabinet corner, white, (2)
38	240327207	A B C	Bracket-upper hinge
40	240327007	A - C	Cover-upper hinge, black
40	240327005	- B -	Cover-upper hinge, white
41	241550801	A B C	Grommet-shelf mtg, 1.40" long
41*	241550701	A B C	Grommet-shelf mtg, .96" long
42	240578902	A B C	Screw, hex head, 1/4-20 x 5/8
43	240335006	A B C	Roller Assy, front, (2)
45	241500303	A B C	Screw, hex washer head, 8-18AB x 0.500
47	241513001	A B C	Channel-shelf mtg, side, (2)
50	241511111	A B C	Board-main power
50*	241524802	A B C	Seal, housing
50*	241532501	A B C	Clip-harness
54	241532401	A B C	Channel
58	218781101	A B C	Screw, pan head, 8-18 x 0.625
66	241513601	A B C	Damper Assy
72	240324411	A - C	Grille/Kickplate, black
72	240324409	- B -	Grille/Kickplate, white
81	5304455650	A B C	Screw, hex washer head, 8-15A x 0.625, low profile
82	5304418225	A B C	Roller, compressor base, rear, (2)
83	5304455655	A B C	Rivet, flat head, 1/4 OD x 1-3/4, roller pin
89	241733902	A B C	Cover-access, w/label
90	218249808	A B C	Seal-coil cover
92	241710601	A B C	Screw, hex washer hd, 1/4 x 7/8, hinge mtg
100	241993101	A B C	Support-crisper cvr
100*	241993001	A B C	Support-crisper cvr
*	241591701	A B C	Louver
*	5303321321	A - C	Paint, touch-up, black
*	5303321319	- B -	Paint, touch-up, white

SHELVES



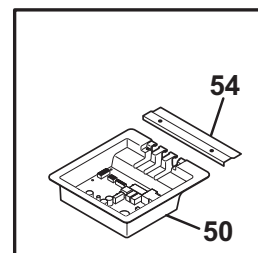
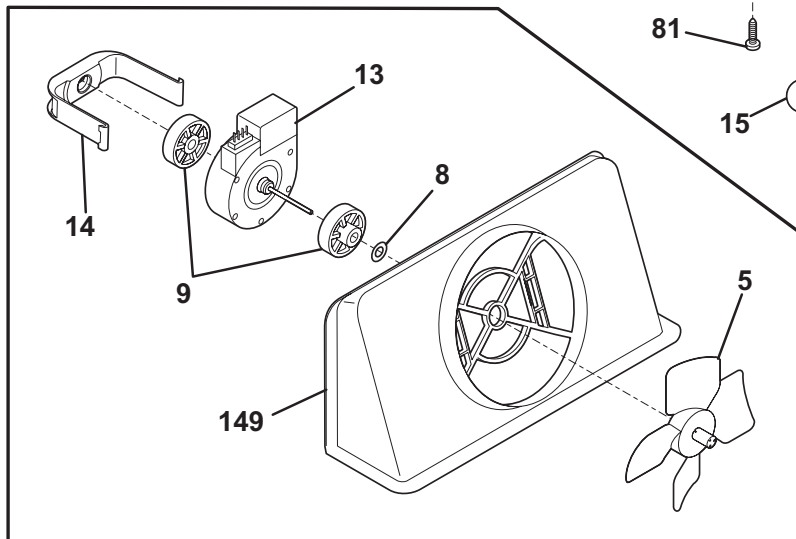
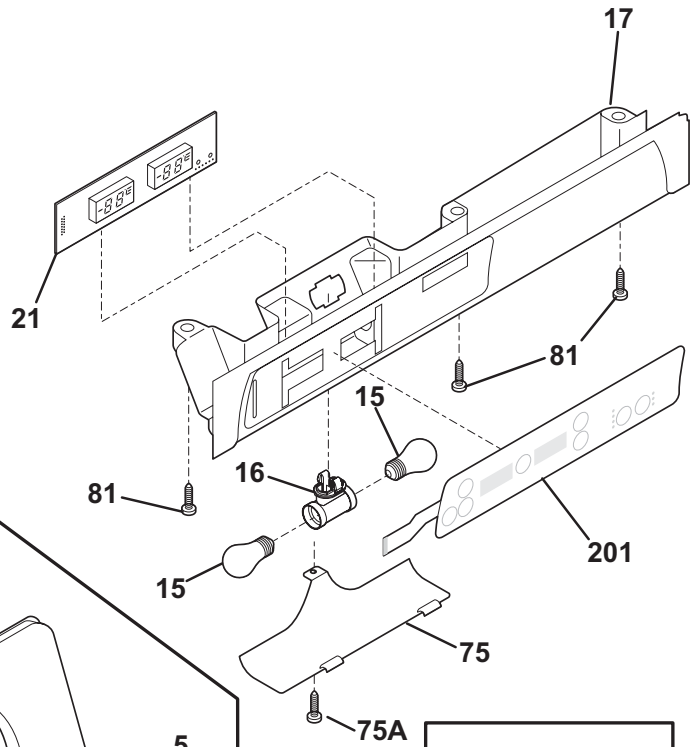
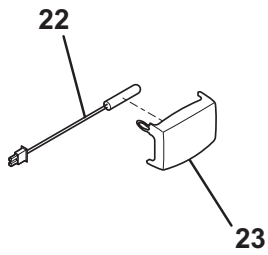
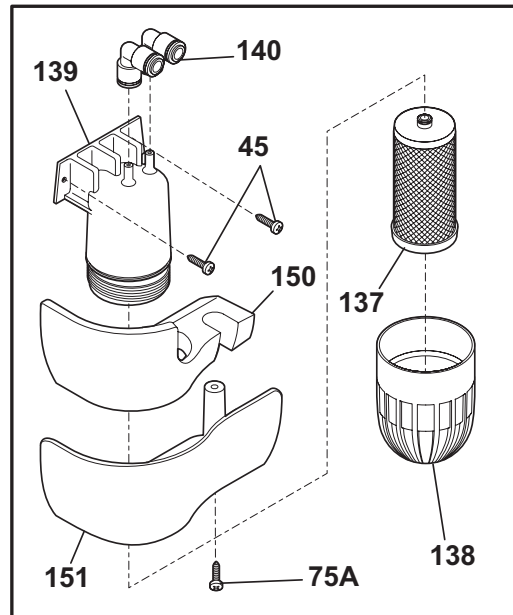
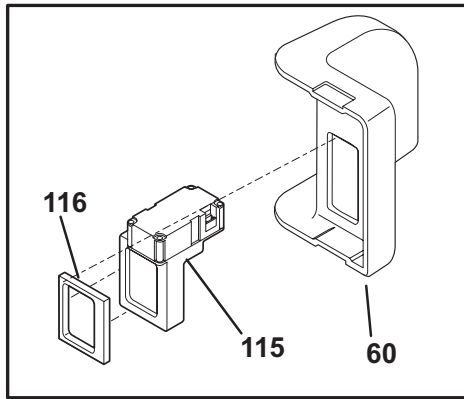
N58SACKBB11

SHELVES

Model Index: A FSC23R5D (FSC23R5DBM)
 B FSC23R5D (FSC23R5DWM)
 C FSC23R5D (FSC23R5DSBL)

POS. NO	PART NO.		DESCRIPTION
2	241510605	A B C	Trim-basket
11	241657605	A B C	Shelf-freezer, flip-up
11A	241657505	A B C	Shelf-freezer, fixed wire
11B	241657506	A B C	Shelf-freezer, fixed wire
15	241552801	A B C	Light Bulb
16	241622802	A B C	Socket-light, frz light
16*	241523202	A B C	Harness-wiring
21	5304455658	A B C	Screw, hx wshr hd sems, 8-15A x 0.625
24	240355240	A B C	Shelf-"Spill-Safe", fixed, (3)
25	240599301	A B C	Cover-crisper pan, upper
25*	240362101	A B C	Clip-slide, cover-crisper
25A	240350903	A B C	Cover-crisper pan, lower
25B	240599801	A B C	Cover-meat pan
26	240351005	A B C	Pan-crisper, upper
26*	240349801	A B C	Clip-slide, pan-crisper
26A	240362201	A B C	Control-humidity
27	240351206	A B C	Pan-crisper, lower
39	240430709	A B C	Trim-shelf, 11.60", front
39A	240430710	A B C	Trim-shelf, 12.86", front
47	240350633	A B C	Insert-pan cover, glass
47A	240350603	A B C	Insert-pan cover, glass
47B	240443360	A B C	Insert-pan cover, glass
49	241515001	A B C	Basket-sliding
51	241514501	A B C	Hanger-basket, RH
52	241514601	A B C	Hanger-basket, LH
62	240599701	A B C	Pan-meat
81	5304455650	A B C	Screw, hex washer head, 8-15A x 0.625, low profile
97	241532006	A B C	Water Tank
100	240326304	A B C	Cover-water tank
101	218493101	A B C	Screw, hex washer head, 8-18AB x 1-3/4
109	241513202	A B C	Base-crisper light socket
120	241691701	A B C	Shelf-ice cream
121	241504701	A B C	Rail-ice cream shelf, LH
122	241504702	A B C	Rail-ice cream shelf, RH
126	241674401	A B C	Channel, auger mtg, LH
126	241674402	A B C	Channel, auger mtg, RH
140	240430504	A B C	Channel, wtr tube cover
*	240598644	A B -	Energy Guide
*	241585940	- - C	Label-energy

CONTROLS



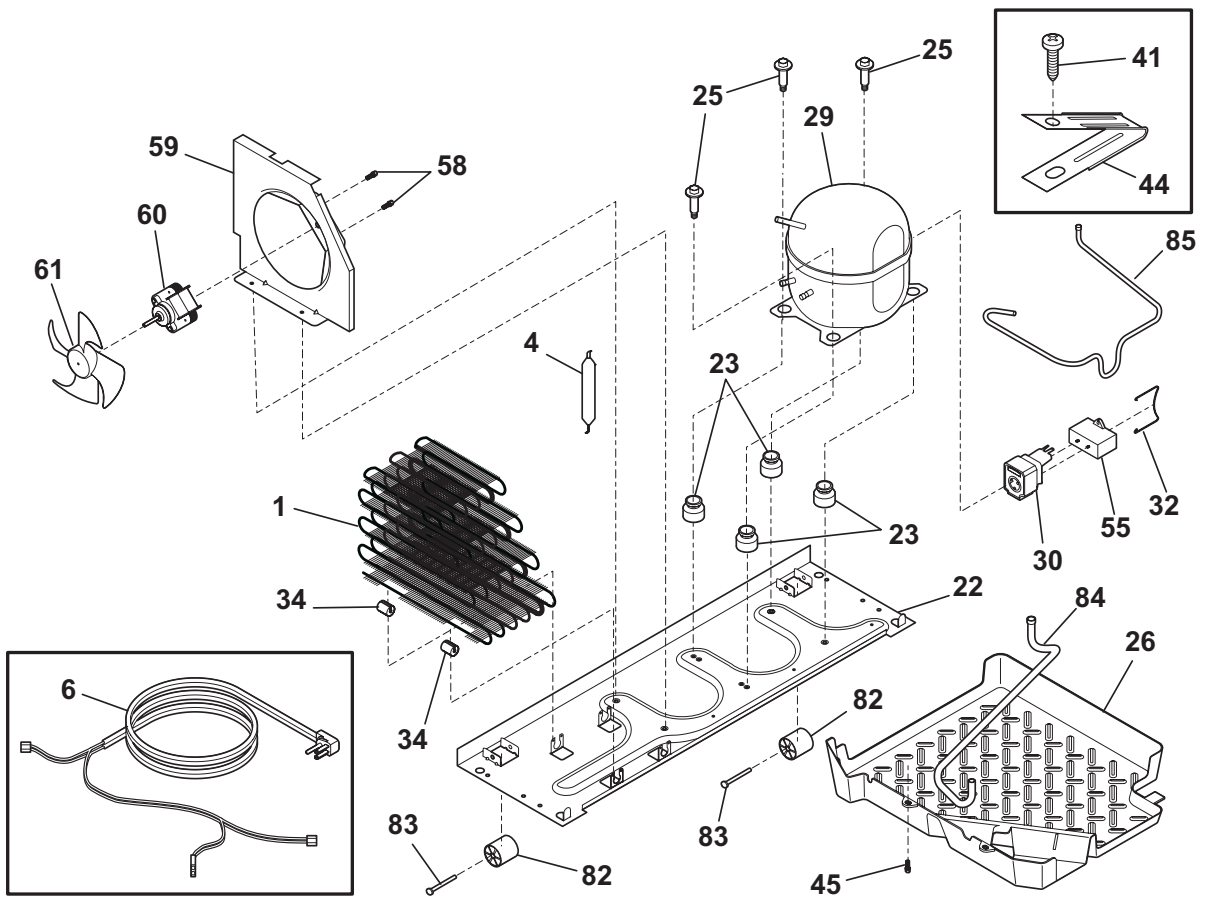
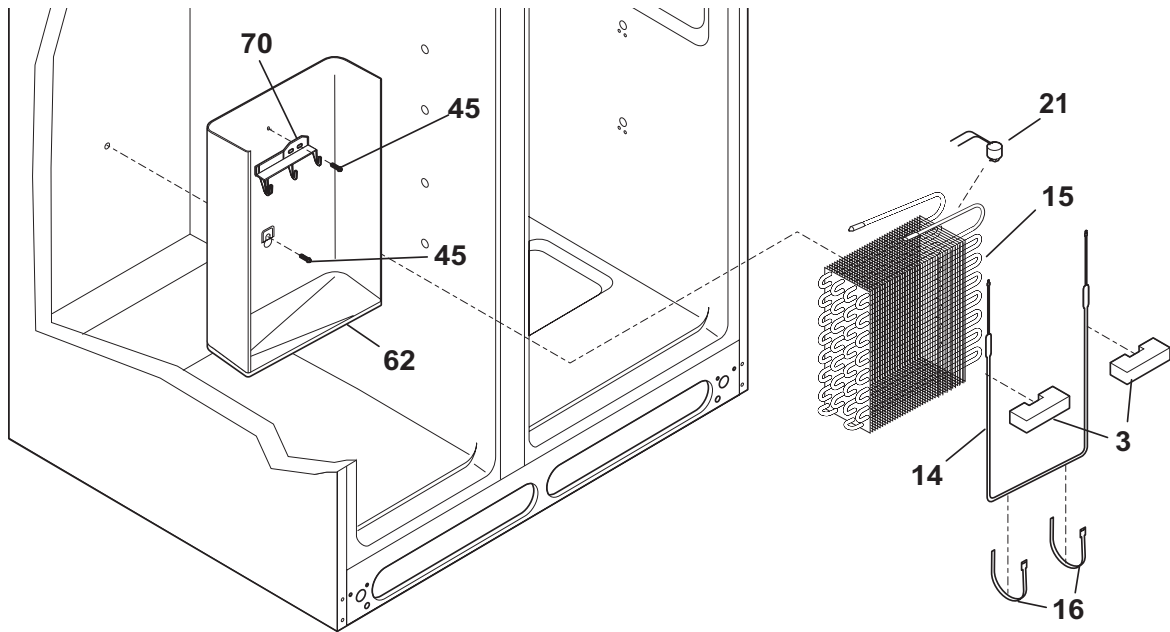
N58TAAAD5

CONTROLS

Model Index: A FSC23R5D (FSC23R5DBM)
 B FSC23R5D (FSC23R5DWM)
 C FSC23R5D (FSC23R5DSBL)

POS. NO	PART NO.		DESCRIPTION
5 #	5308000010	A B C	Fan Blade, red, evaporator fan
8	215474201	A B C	Washer, "slinger", nylon, evap fan shaft
9	241518301	A B C	Bushing, motor mounting
13	241509402	A B C	Motor, evaporator fan
13*	241510501	A B C	Seal-diffuser
14	241517701	A B C	Clip, evap fan motor
15	241552801	A B C	Light Bulb
16	241622802	A B C	Socket-light, frz light
17	241522801	A B C	Box-control, front
17*	240570304	A B C	Tape, aluminum, 3" wide
17*	241510802	A B C	Harness-wiring, frz light
21 #	240596803	A B C	Control, electronic
22	240597203	A B C	Sensor
23	241512901	A B C	Cover-sensor
45	241500303	A B C	Screw, hex washer head, 8-18AB x 0.500
50	241511111	A B C	Board-main power
50*	241524802	A B C	Seal, housing
50*	241532501	A B C	Clip-harness
54	241532401	A B C	Channel
60	241510301	A B C	Diffuser-air
75	241517802	A B C	Shield-light
75A	5304455650	A B C	Screw, hex washer head, 8-15A x 0.625, low profile
81	5304455658	A B C	Screw, hx wshr hd sems, 8-15A x 0.625
115	241518501	A B C	Damper, motorized
116	241518601	A B C	Seal-damper, foam
137#	240389102	A B C	Filter, water, carbon canister, rear, with o'rings
137*	218710300	A B C	Wrench-filter
138	240434401	A B C	Cup-water filter
138*	218904301	A B C	O-ring, wtr filter cup
139	240434301	A B C	Housing-water filtr
140	240545201	A B C	Elbow-water tube
149	241517601	A B C	Shroud-evap fan mtg
149*	241528304	A B C	Seal, foam, evap fan assy
150	240394102	A B C	Insulation-water filter cover
151	240376002	A B C	Cover-water filter
201	240598701	A B C	Switch-membrane

SYSTEM



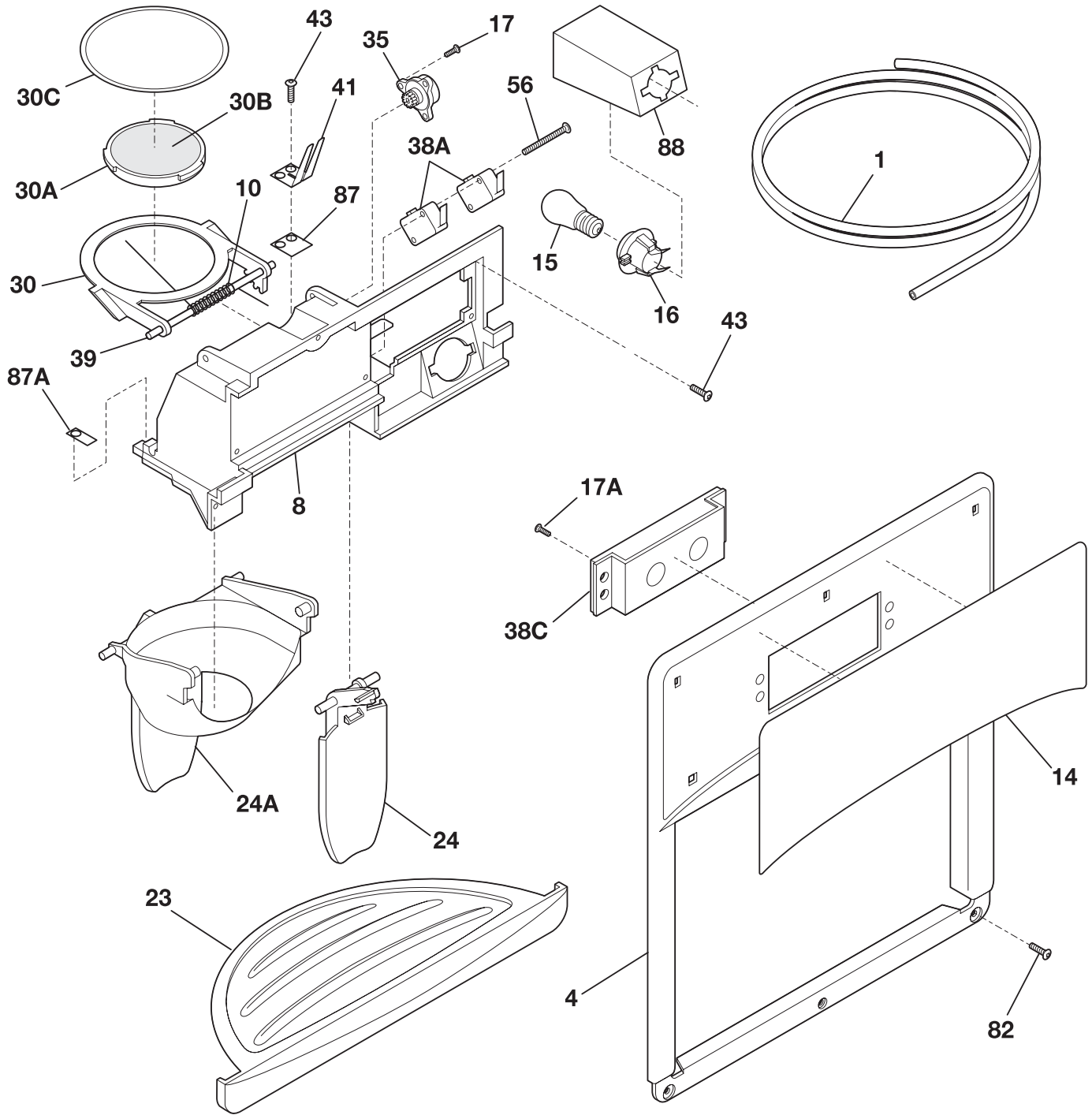
N58CAAAA13

SYSTEM

Model Index: A FSC23R5D (FSC23R5DBM)
 B FSC23R5D (FSC23R5DWM)
 C FSC23R5D (FSC23R5DSBL)

POS. NO	PART NO.		DESCRIPTION
1	240333603	A B C	Condenser
3	218679607	A B C	Block-evap coil, styrofoam, (2)
4 #	218944001	A B C	Drier-filter, R134a System
6 #	241516901	A B C	Cord-service
6* #	241510802	A B C	Harness-wiring, frz light
6* #	241519902	A B C	Harness-wiring
6* #	241635603	A B C	Harness-wiring, machine compt
14 #	241940201	A B C	Heater-defrost
15 #	5303918284	A B C	Evaporator Kit
16	5308000110	A B C	Strap-evap/heater, aluminum, (2)
21	5303918214	A B C	Thermostat-defrost, kit
22	240330011	A B C	Base-compressor mtg
22*	218252201	A B C	Screw, #8 truss hd, 10-32CA x 0.500
23	218513300	A B C	Grommet-compr mtg, (4)
25	240491503	A B C	Screw-compressor mtg, 1/4-28 x 1.16, (4)
26	241697501	A B C	Pan-defrost drain
29 #	5303918353	A B C	Compressor Kit
29*	240433204	A B C	Screw, hex washer head, 8-18 x 5/16
30 #	241707709	A B C	Starter
32	241715901	A B C	Strap-cover
34	240405201	A B C	Grommet, rubber, black, cond tube/wire
41	240555002	A B C	Screw-#8-32 X 3/8
44	215174700	A B C	Clamp-service cord, strain relief, galv steel
45	5304455650	A B C	Screw, hex washer head, 8-15A x 0.625, low profile
55	218909913	A B C	Capacitor, run, 220 VAC, 15 microfarad
58	240569201	A B C	Screw, 8-18 x 0.500
59	241946106	A B C	Shroud-cond fan
59*	240346701	A B C	Tape-foam seal, shroud
59*	240359403	A B C	Screw-fan shroud, (2)
60 #	241584301	A B C	Motor-condenser fan
61	241639501	A B C	Blade-condenser fan
62	240429402	A B C	Trough-drain
70	218990801	A B C	Bracket-evap/cvr mtg
82	5304418225	A B C	Roller, compressor base, rear, (2)
83	5304455655	A B C	Rivet, flat head, 1/4 OD x 1-3/4, roller pin
84	241957901	A B C	Tube-drain, lower
85	241844801	A B C	Tube-connector, suction
*	5303918222	A B C	Hot Tube Repair Kit, service
* #	5303918327	A B C	Heat Exchanger Kit, suction line

ICE & WATER DISPENSER



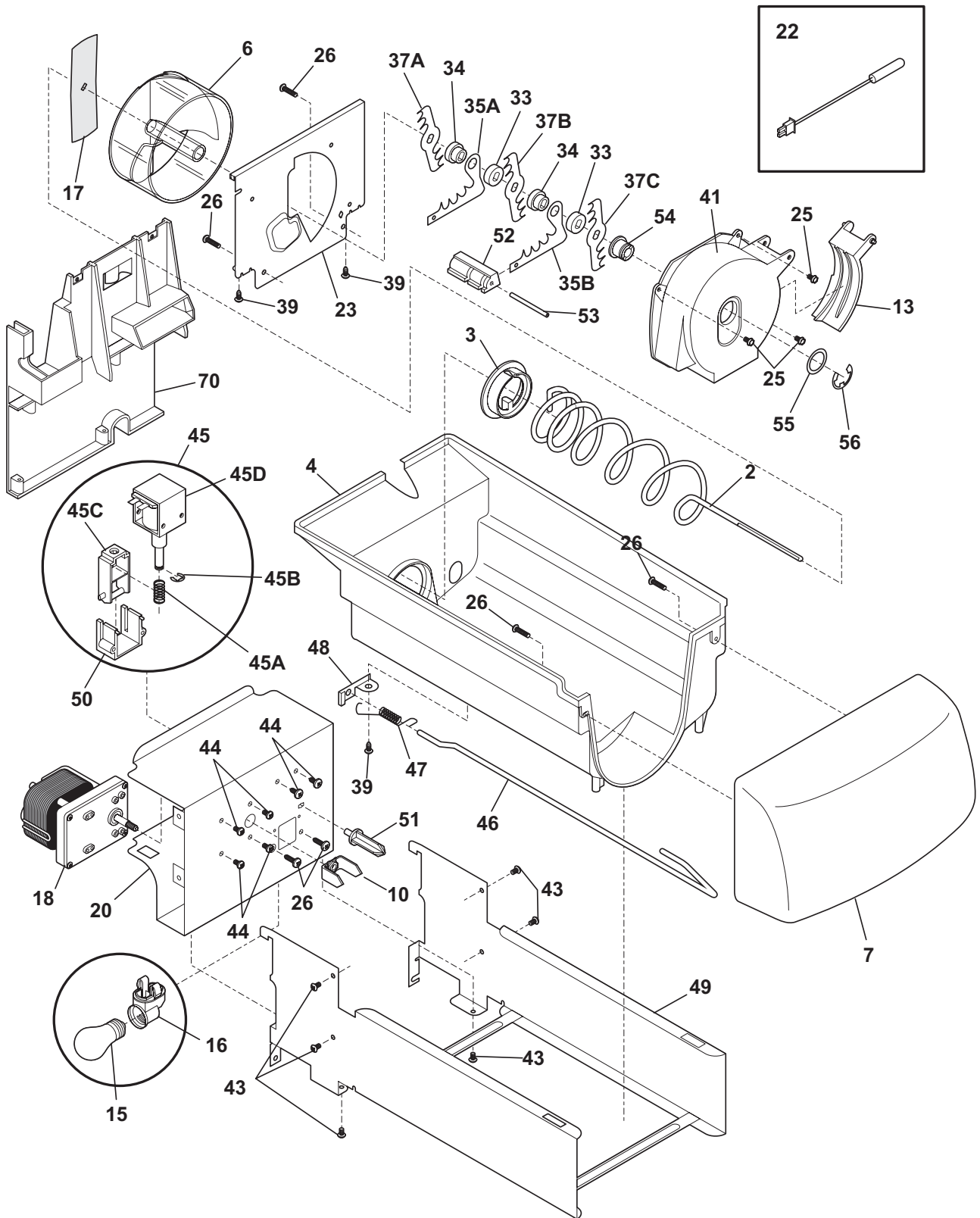
N58XDAAA1

ICE & WATER DISPENSER

Model Index: A FSC23R5D (FSC23R5DBM)
 B FSC23R5D (FSC23R5DWM)
 C FSC23R5D (FSC23R5DSBL)

POS. NO	PART NO.		DESCRIPTION
1	218976409	A B C	Tube, water, door
1*	218976420	A B C	Tube-water inlet, inlet valve, to filter
1*	218976421	A B C	Tube-water inlet, valve to door
1*	218976915	A B C	Tube-water inlet, inlet valve, to filter
1*	240561702	A B C	Seal-water inlet, inlet valve, to ice maker
4	241679003	A - C	Cover-module, black
4	241679001	- B -	Cover-module, white
8	241680507	A - C	Module-dispenser
8	241680505	- B -	Module-dispenser
10	241688901	A B C	Spring-torsion
14	240570206	A - C	Label-module cover, black
14	240570204	- B -	Label-module cover, white
15	241689401	A B C	Light Bulb
16	240548901	A B C	Socket-light
17	241679801	A B C	Screw
17A	241679901	A B C	Screw, switch mtg.
23	241649003	A - C	Drip Tray, black
23	241649001	- B -	Drip Tray, white
24	241682003	A - C	Actuator-water, black
24	241682001	- B -	Actuator-water, white
24A	241681903	A - C	Actuator-ice, black
24A	241681901	- B -	Actuator-ice, white
30	241688401	A B C	Door Assy-ice chute
30A	241688501	A B C	Door center
30B	241688601	A B C	Insulation-door
30C	241688701	A B C	Door seal
35	241689301	A B C	Damper-rotary
38A#	241689101	A B C	Switch-micro, single pole, double throw
38A*	241679201	A B C	Harness-wiring
38C#	241679101	A B C	Switch
38C*	241686001	A B C	Harness-wiring
39	241688801	A B C	Pin-hinge
41	241689001	A B C	Spring-actuator
43	215296301	A B C	Screw, plask h/l, #6 x 3/8
56	241689201	A B C	Screw-micro switch, pan head
82	240363402	A B C	Screw-#8-18 X 1/2, #6 hd plask
87	241688302	A B C	Bearing Plate
87A	241688301	A B C	Bearing Plate
88	241686101	A B C	Shield-light
*	218515403	A B C	Clip-grille
*	5303918256	A B C	Dispenser heater kit

ICE CONTAINER



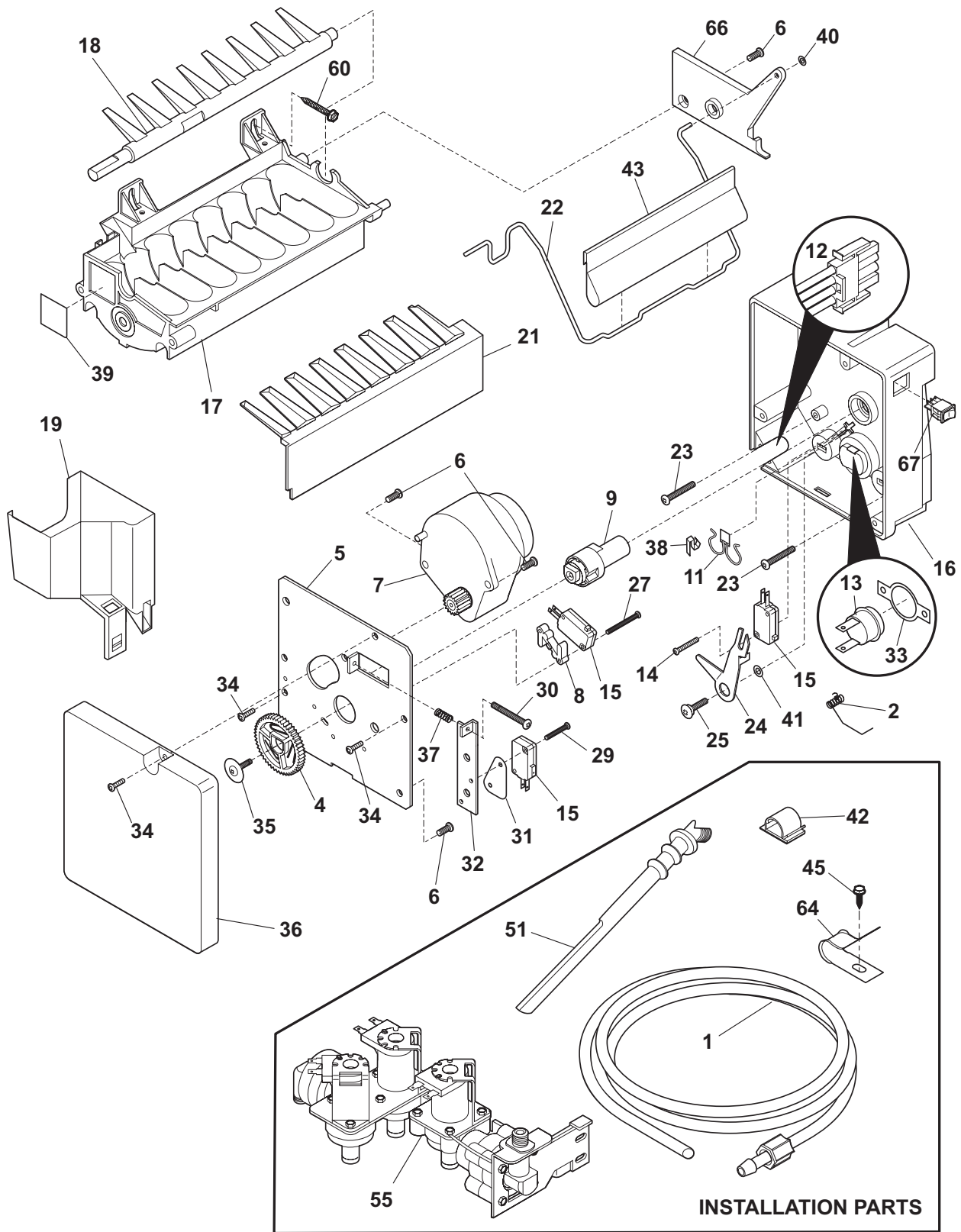
N58YDAAAC4

ICE CONTAINER

Model Index: A FSC23R5D (FSC23R5DBM)
 B FSC23R5D (FSC23R5DWM)
 C FSC23R5D (FSC23R5DSBL)

POS. NO	PART NO.		DESCRIPTION
2	241684701	A B C	Auger-ice
3	241685201	A B C	Cam-drive
4	241515202	A B C	Container-ice, bucket only
6	241685101	A B C	Drum-ice disp
7	241515301	A B C	Front-ice container
10	241726501	A B C	Bar-drive
13	241685301	A B C	Gate
15	241555401	A B C	Light Bulb
16	241559801	A B C	Socket-light
17	241684501	A B C	Drive Blade
18 #	241676201	A B C	Motor-auger
18*	241522901	A B C	Harness-wiring, icmkr/container
20	241675502	A B C	Cover-motor
22	240597203	A B C	Sensor
22*	241519401	A B C	Clip, sensor
23	241684001	A B C	Plate-front
25	241690701	A B C	Screw, hex washer head, 8-32T x 0.375
26	215503203	A B C	Screw, cr pan hd, 10-16 x 0.500
33	241684801	A B C	Spacer
34	241689801	A B C	Spacer
35A	241684301	A B C	Fixed Blade, round
35B	241684201	A B C	Fixed Blade, square
37A	241684101	A B C	Blade, crusher #1
37B	241684102	A B C	Blade, crusher #2
37C	241684103	A B C	Blade, crusher #3
39	241690501	A B C	Screw
41	241685601	A B C	Housing-crusher
43	218359202	A B C	Screw, pan head, 8-32 x 0.250
44	241842101	A B C	Screw, 8-32 x 1/4
45 #	241675701	A B C	Solenoid Assy, 115V
45A	241675901	A B C	Spring-solenoid
45B	241676001	A B C	E-Ring-solenoid
45C	241676101	A B C	Actuator-solenoid
45D#	241675801	A B C	Solenoid, 115V
46	241684402	A B C	Control Rod
47	241731801	A B C	Spring-control rod
48	241684602	A B C	Bracket-control rod
49	241676501	A B C	Rail Assy
50	241675601	A B C	Guide-solenoid
51	241676301	A B C	Rotation Stop
52	241684901	A B C	Spacer-fixed blades
53	241690402	A B C	Pin-spiral, fixed blades
54	241685001	A B C	Nut-auger
55	241690306	A B C	Washer
56	241690201	A B C	E-ring
70	241504601	A B C	Plate-mounting
70*	215005101	A B C	Screw, hanger/rlr mtg, 8-10 x 7/16
70*	241551602	A B C	Screw, hex head, 8-18B x 0.875
70*	241716801	A B C	Clip
*	240562101	A B C	Insulator
*	241914702	A B C	Ice Container Assy

ICE MAKER



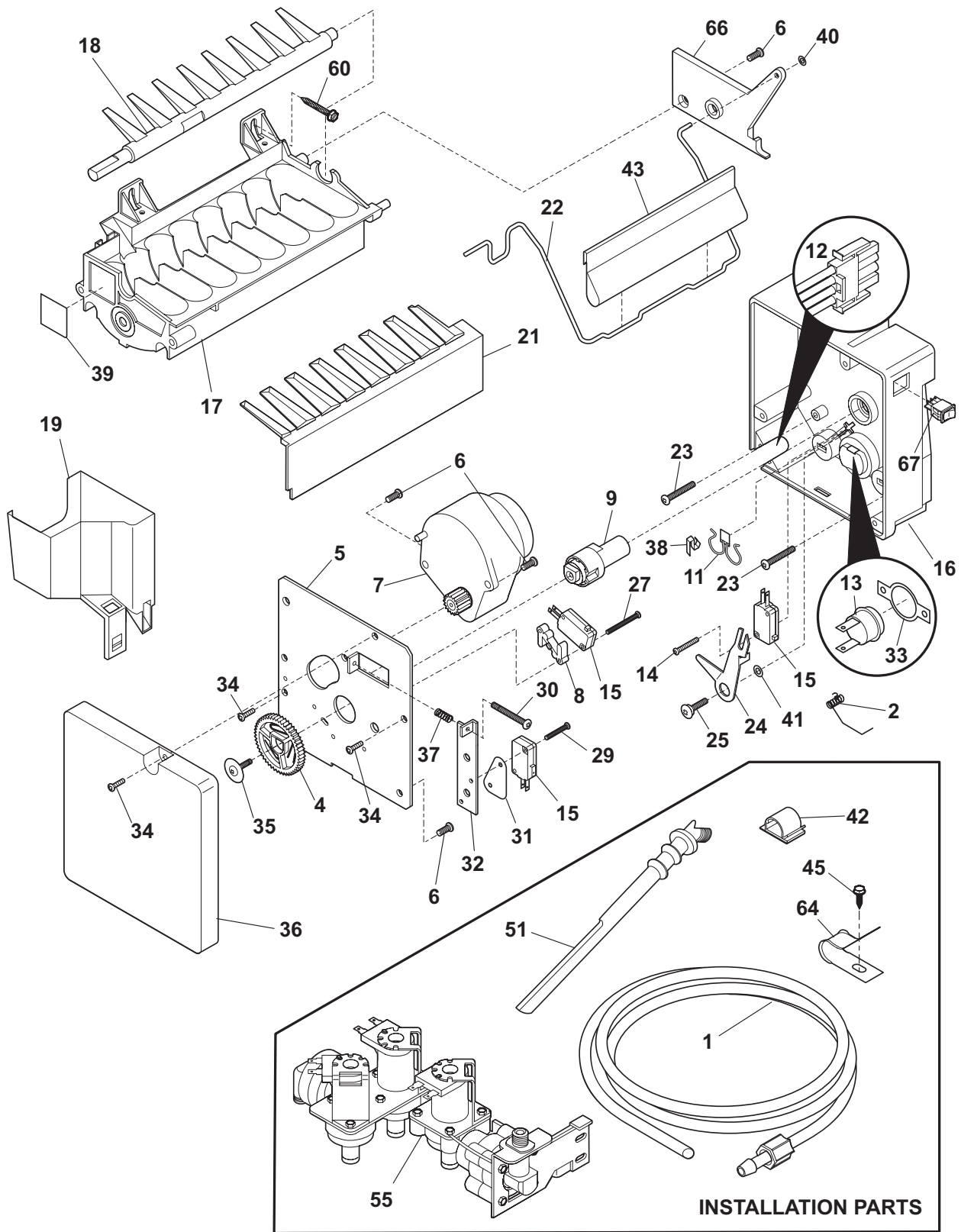
N581115TServo

ICE MAKER

Model Index: A FSC23R5D (FSC23R5DBM)
 B FSC23R5D (FSC23R5DWM)
 C FSC23R5D (FSC23R5DSBL)

POS. NO	PART NO.		DESCRIPTION
1	218976409	A B C	Tube, water, door
1	218976421	A B C	Tube-water inlet, valve to door
1*	218976420	A B C	Tube-water inlet, inlet valve, to filter
1*	218976915	A B C	Tube-water inlet, inlet valve, to filter
1*	240561702	A B C	Seal-water inlet, inlet valve, to ice maker
2	5304459922	A B C	Spring, shut-off arm
4	5304458380	A B C	Gear
5	5304458383	A B C	Plate-mounting
6	5304458386	A B C	Screw
7 #	5304458382	A B C	Motor-ice maker Svo
8	5304458388	A B C	Spacer-hold switch
9	5304456662	A B C	Cam
11 #	5304458400	A B C	Thermal Cutoff, ice maker
12	5304458379	A B C	Harness-wiring
13	5304456665	A B C	Thermostat, ice maker
14	5304458384	A B C	Screw
15 #	5304456667	A B C	Switch-micro, (3)
16	5304458395	A B C	Housing, control
17	5304456669	A B C	Mold-ice maker, w/therm cut off
18	5304458377	A B C	Ejector-ice
18*	241522901	A B C	Harness-wiring, icmkr/container
18*#	240352601	A B C	Wiring Harness, internal, with plug
19	5304458378	A B C	Cup-water inlet
21	5304458390	A B C	Ice Stripper
22	5304458375	A B C	Shut-off Arm
23	5304458394	A B C	Screw
24	5304458391	A B C	Lever Arm
25	5304456676	A B C	Screw, M 4x12.8 #2, lever arm/sprt
27	5304458385	A B C	Screw
29	5304458393	A B C	Screw
30	5304458387	A B C	Screw
31	5304458381	A B C	Insulator
32	5304456681	A B C	Plate-valve switch
33	5304458403	A B C	Retainer-thermostat
34	5304456678	A B C	Screw, M 3x12 #3, (2)
35	5304456684	A B C	Screw
36	5304458376	A B C	Cover-ice maker
37	5304456682	A B C	Spring, timing adjust
38	5304458398	A B C	Clip
39	5304458399	A B C	Conductor-heat
40	5304458401	A B C	Clip-retainer
41	5304456689	A B C	Washer, nylon
42	218515403	A B C	Clip-grille
43	241720601	A B C	Extension
45	5304455650	A B C	Screw, hex washer head, 8-15A x 0.625, low profile
51	241796402	A B C	Tube-water fill, extension
55 #	241734301	A B C	Valve-water, triple solenoid
55*	218709101	A B C	Screw, hex head, 10-32 x 0.500

ICE MAKER



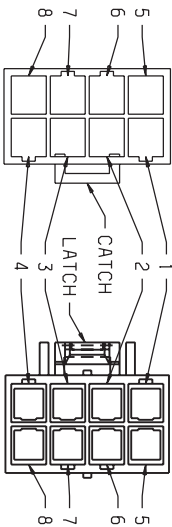
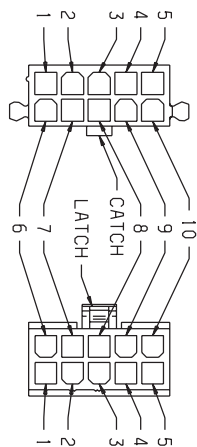
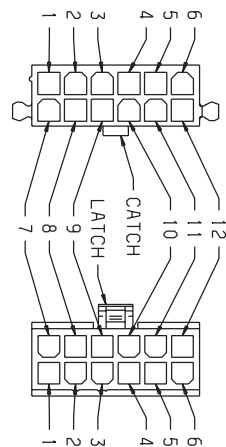
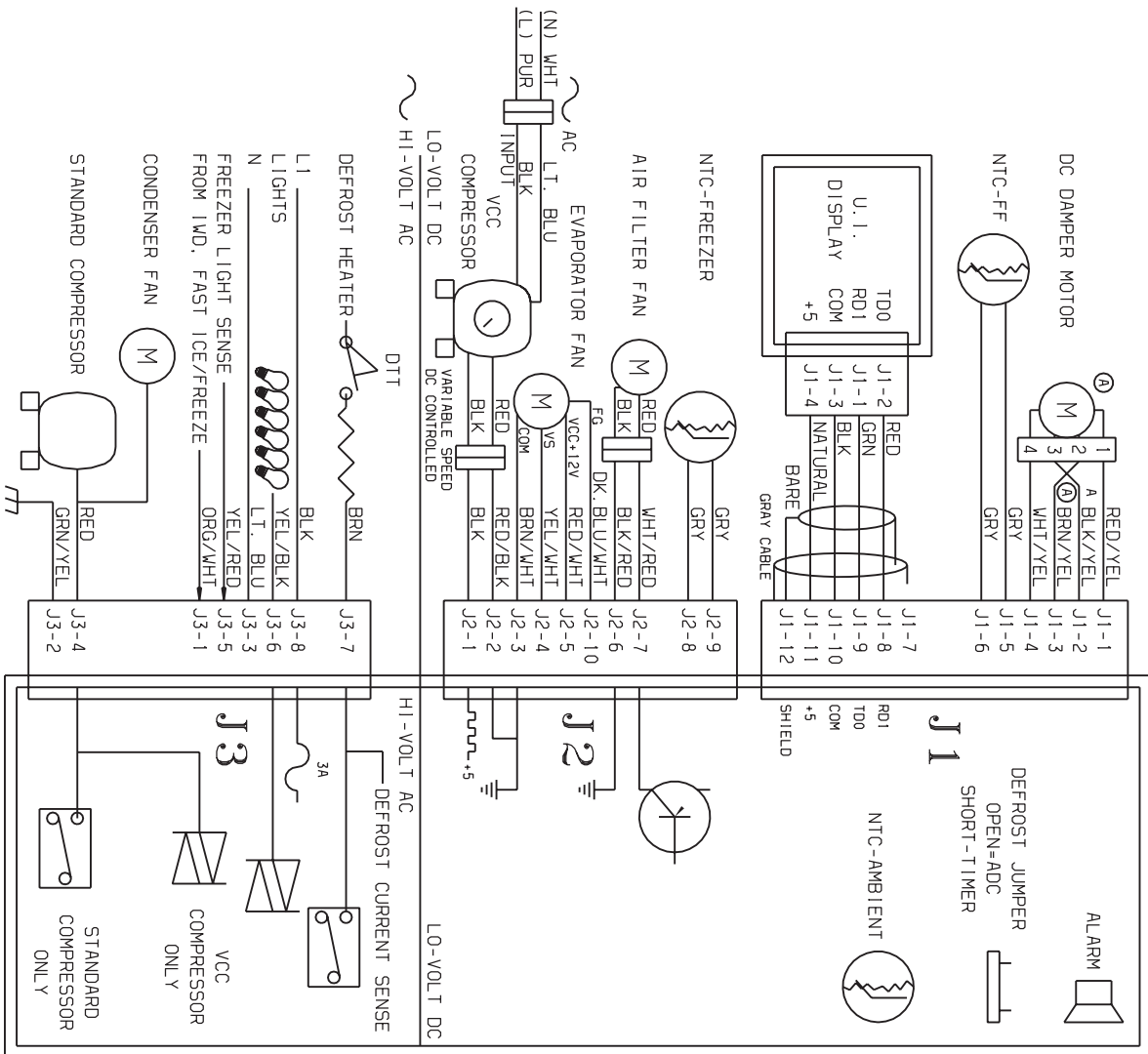
N581115TServo

ICE MAKER

Model Index: A FSC23R5D (FSC23R5DBM)
 B FSC23R5D (FSC23R5DWM)
 C FSC23R5D (FSC23R5DSBL)

POS. NO	PART NO.		DESCRIPTION
55*	240363602	A B C	Screw-shoulder
55*	240542901	A B C	Cap-water valve
60	5304455651	A B C	Screw, hex washer head, 8-15A x 0.500
64	5304455846	A B C	Clamp, .31 ID, steel, water tube
66	5304458374	A B C	Bracket-ice maker
67	5304458392	A B C	Switch-on/off
*	241583301	A B C	Deflector-air, ice maker
*	241806601	A B C	Connector-water, straight
*	5304456660	A B C	Screw, M 4x6 #2
*	5304458389	A B C	Screw
*#	241709801	A B C	Ice Maker, radius cube, 115 V, no instl parts

WIRING SCHEMATIC



S241516401A

